

---

# 2PE

---

## Aluminium gear pumps

---

Technical Catalogue

E0.120.04.16.02.00IM02



### WORKING CONDITIONS

	Displacement		Working pressure P <sup>1**</sup>		Intermittent pressure P <sup>2</sup>		Peak pressure P <sup>3</sup>		Max. speed	Min. speed
	cm <sup>3</sup> /rev	cu.in/rev	bar	psi	bar	psi	bar	psi		
<b>GROUP 1.5 - E SERIES</b>									min <sup>-1</sup>	
1.5PE - 1.4	1.4	0.09	250	3625	270	3915	290	4205	5000	700
1.5PE - 2.1	2.1	0.13	250	3625	270	3915	290	4205	5000	700
1.5PE - 2.8	2.8	0.17	250	3625	270	3915	290	4205	4500	700
1.5PE - 3.5	3.5	0.21	250	3625	270	3915	290	4205	4500	700
1.5PE - 4.1	4.1	0.25	250	3625	270	3915	290	4205	4000	700
1.5PE - 5.2	5.2	0.32	230	3335	250	3625	270	3915	4000	700
1.5PE - 6.2	6.2	0.38	230	3335	250	3625	270	3915	3600	600
1.5PE - 7.6	7.6	0.46	200	2900	220	3190	250	3625	3300	600
1.5PE - 9.3	9.3	0.57	180	2610	200	2900	240	3480	3000	600
1.5PE - 11	11	0.67	170	2465	190	2755	220	3190	3000	600

<b>GROUP 2 - E SERIES</b>	cm <sup>3</sup> /rev	cu.in/rev	bar	psi	bar	psi	bar	psi	min <sup>-1</sup>	
2PE - 3.2*	3.2	0.19	250	3625	280	4060	300	4350	4000	600
2PE - 3.9*	3.9	0.24	250	3625	280	4060	300	4350	4000	600
2PE - 4.5	4.6	0.27	250	3625	280	4060	300	4350	4000	600
2PE - 6.5	6.5	0.4	250	3625	280	4060	300	4350	4000	600
2PE - 8.3	8.2	0.5	250	3625	280	4060	300	4350	3500	500
2PE - 10.5	10.6	0.65	250	3625	280	4060	300	4350	3500	500
2PE - 11.3	11.5	0.68	250	3625	280	4060	300	4350	3500	500
2PE - 12.5	12.7	0.77	250	3625	280	4060	300	4350	3500	500
2PE - 13.8	13.8	0.84	250	3625	280	4060	300	4350	3500	500
2PE - 16	16.6	1.01	250	3625	280	4060	300	4350	3000	400
2PE - 19	19.4	1.15	220	3140	240	3480	260	3750	3000	400
2PE - 22.5	22.9	1.37	200	2900	220	3140	240	3480	2750	400
2PE - 26	25.8	1.58	180	2610	200	2900	220	3190	2500	400

\*Available only as rear pump

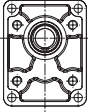





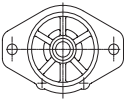
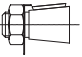
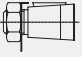


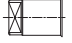
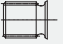



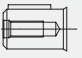
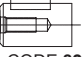
<b>GROUP 2.5 - B SERIES</b>	cm <sup>3</sup> /rev	cu.in/rev	bar	psi	bar	psi	bar	psi	min <sup>-1</sup>	
2.5PB - 5.5*	5.97	0.36	250	3625	280	4060	300	4350	3000	600
2.5PB - 8.3*	8.29	0.50	250	3625	280	4060	300	4350	3000	600
2.5PB - 11.5*	11.76	0.72	250	3625	280	4060	300	4350	3000	600
2.5PB - 13.8*	14.07	0.86	250	3625	280	4060	300	4350	3000	600
2.5PB - 16	16	0.97	250	3625	280	4060	300	4350	3000	600
2.5PB - 19	19.3	1.17	250	3625	280	4060	300	4350	3000	600
2.5PB - 22	22.2	1.35	250	3625	280	4060	300	4350	3000	500
2.5PB - 25	25.2	1.53	250	3625	280	4060	300	4350	3000	500
2.5PB - 28	27.6	1.68	250	3625	280	4060	300	4350	3000	500
2.5PB - 32	32.4	1.97	230	3330	250	3625	260	3750	3000	500
2.5PB - 38	38.1	2.32	200	2900	220	3140	240	3480	2750	400
2.5PB - 44	44.2	2.69	170	2465	190	2755	210	3040	2500	400

\*Available only as rear pump. Displacements 11.5-13.8 are available as single pump only with drive shaft "55".

E0.100.0416.02.00IM00



**SHAFTS AND FLANGES COMBINATION**

2PE							
	CODE P1 European Standard	CODE B1 German Standard	CODE B2-B3 German Standard	CODE B4-B5 German Standard	CODE S2 SAE A 2 Bolts	CODE C1 4 Bolts Iveco	CODE S3 SAE B 2 Bolts
 CODE 25 Tapered 1:5		25B1		25B4 25B5			
 CODE 28 Tapered 1:8	28P1						
 CODE 02 Tang drive for diesel engines							
 CODE 03 Tang drive for electric motors			03B2 03B3				
 CODE 04 Tang drive				04B4 04B5			
 CODE 62 DIN 5482 splined 9 T	62P1	62B1		62B4 62B5		62C1	
 CODE 52 SAE A splined 9T					52S2		
 CODE 54 SAE A splined 11T					54S2		
 CODE 55 SAE B splined 13T							55S3
 CODE 85 SAE A parallel shaft Ø19.05					85S2		
 CODE 82 SAE A parallel shaft Ø15.87	82P1				82S2		

Note: other versions available, see shafts and flanges information.



Displacements up to 1.58 cu.in./rev  
Pressure up to 4350psi



Displacements up to 25.8 cm<sup>3</sup>/rev  
Pressure up to 300 bar

### ASSEMBLING DIMENSIONS

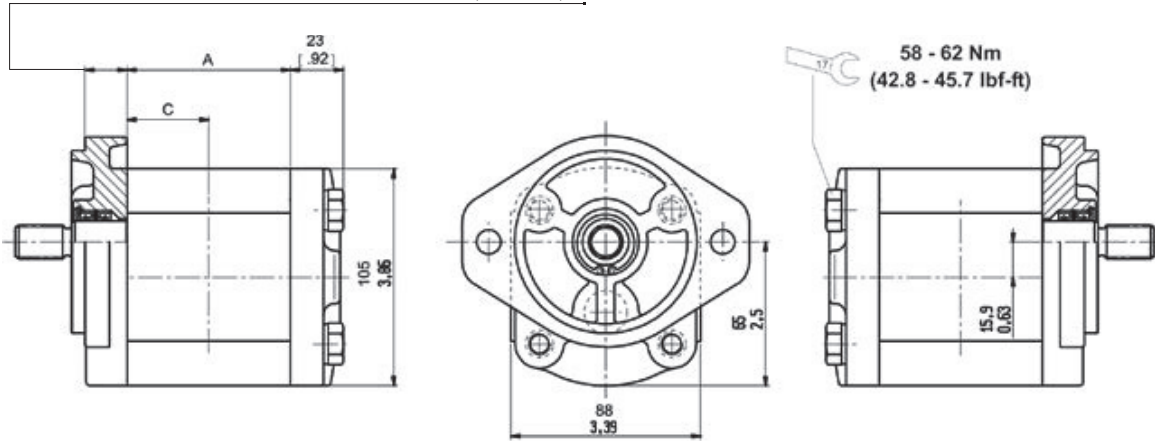
Type		3.2*	3.9*	4.5	6.5	8.3	10.5	11.3	12.5	13.8	16	19	22.5	26
Displacement	cm <sup>3</sup> /rev cu.in./rev	3.2 0.19	3.9 0.24	4.6 0.27	6.5 0.40	8.2 0.50	10.6 0.65	11.5 0.68	12.7 0.77	13.8 0.84	16.6 1.01	19.4 1.15	22.9 1.37	25.8 1.58
Dimension A	mm in		47.1 1.83		49.95 1.97	52.8 2.07	56.3 2.22		59.7 2.35	63.5 2.5	67.5 2.65	75.6 2.97	81 3.19	86.8 3.42
Dimension C	mm in		23.55 0.93		25 0.98	26.4 1.04	28.15 1.11		29.75 1.17	31.75 1.25	33.75 1.33	37.80 1.49	40.5 1.59	43.4 1.71
Weight	kg	2.01	2.05		2.1		2.25	2.3	2.37	2.4	2.5	2.8	2.95	3.1
	lbs	4.4	4.5		4.6		5.0	5.1	5.2	5.3	5.5	6.2	6.5	6.8

\*Available only as rear pump

For flanges code:

P1-B1-S2-S6, this dimension is 19 mm (0.75 in.)

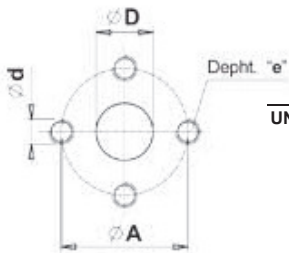
B2-B3-B4-B5, this dimension is 16.5 mm (0.65 in.)



E0.120.0416.02.00IM02



**FLANGED AND THREADED PORTS**



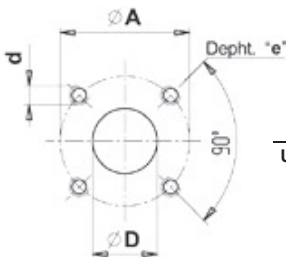
**code P**

Flanged ports  
european standard

UNI-DIRECTIONAL PUMPS	TYPE	INLET				OUTLET			
		Ø D	Ø A	d	e	Ø D	Ø A	d	e
	From 3.2 to 8.3	13 (0.51")	30 (1.19")	M6	13 (0.51")	13 (0.51")	30 (1.18")	M6	13 (0.51")
	From 11.3 to 22.5	20 (0.79")	40 (1.57")	M8					
	26	22 (0.87")							



BI-DIRECTIONAL PUMPS Special version available on request.



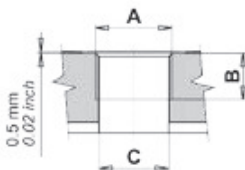
**code B**

Flanged ports  
german standard

UNI-DIRECTIONAL PUMPS	TYPE	INLET				OUTLET			
		Ø D	Ø A	d	e	Ø D	Ø A	d	e
	From 3.2 to 22.5	20 (0.78")	40 (1.56")	M6	13 (0.51")	15 (0.59")	35 (1.38")	M6	13 (0.51")
	26	22 (0.87")							



BI-DIRECTIONAL PUMPS Special version available on request.



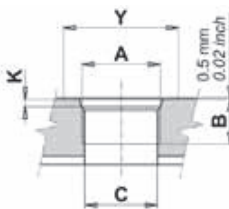
**code G**

Threaded ports  
GAS (BSPP)

UNI-DIRECTIONAL PUMPS	TYPE	INLET			OUTLET		
		A	B	ØC	A	B	ØC
	From 3.2 to 26	G3/4	16 (0.62")	20 (0.78")	G1/2	14 (0.54")	13 (0.51")



BI-DIRECTIONAL PUMPS Special version available on request.



**code R**

Threaded ports  
SAE (ODT)

UNI-DIRECTIONAL PUMPS	TYPE	INLET					OUTLET				
		A	B	ØC	Y	K	A	B	ØC	Y	K
	From 3.2 to 26	1-1/16-12 UN (SAE 12)	16 (0.62")	20 (0.78")	41 (1.61")	3.3 (0.12")	7/8-14 UNF (SAE 10)	14 (0.54")	13 (0.78")	34 (1.32")	2.5 (0.10")

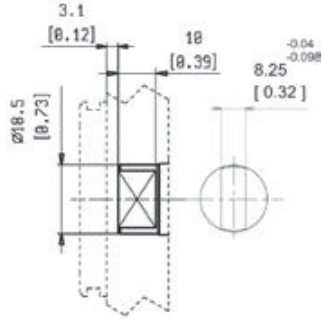


BI-DIRECTIONAL PUMPS Special version available on request.

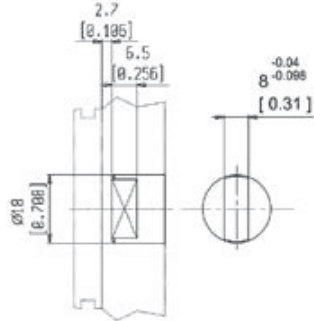
EO.120.0416.02.001M02



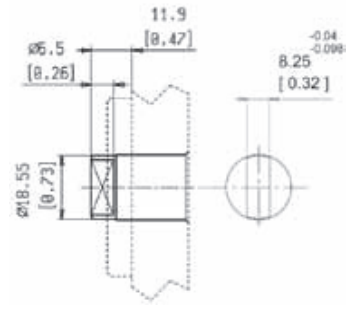
## DRIVE SHAFTS



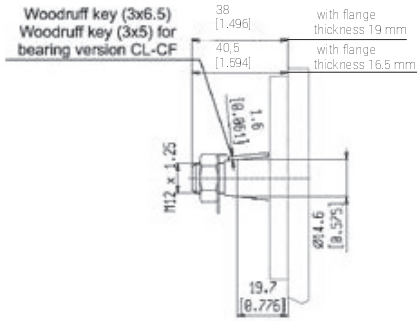
**code 02** Max torque 70 (620 lbf in)  
Tang drive for engine driven  
For flange K1 without shaft seal



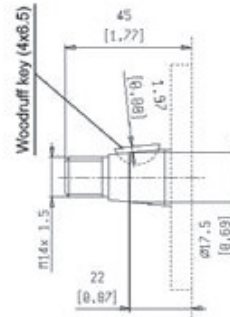
**code 03** Max torque 70 Nm (620 lbf in)  
Tang drive for electric motors  
Without shaft seal



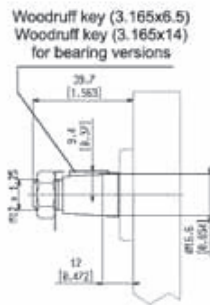
**code 04** Max torque 70 Nm (620 lbf in)  
Tang drive



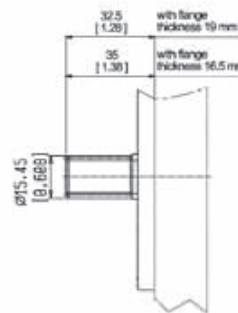
**code 25** Max torque 130 Nm (1151 lbf in)  
Tapered 1:5



**code 26** Max torque 100 Nm (885 lbf in)  
Tapered 1:5 (only for CB)



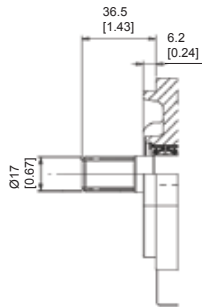
**code 28** Max torque 130 Nm (1151 lbf in)  
Tapered 1:8



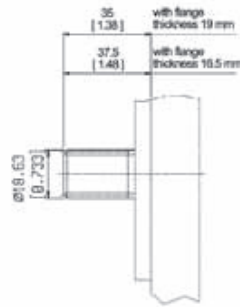
**code 52** Max torque 100 Nm (885 lbf in)  
SAE A 9T-16/32DP Ansi B92 1a 1976

E0.120.0416.02.00IM02

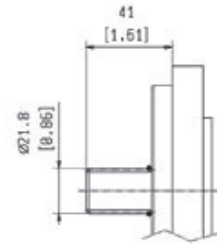




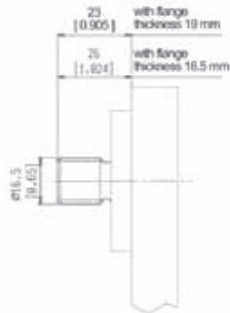
**code 53** Max torque 125 Nm (1106 lbf in)  
**SAE 10T-16/32DP Ansi B92 1a 1976**



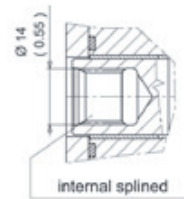
**code 54** Max torque 150 Nm (1327 lbf in)  
**SAE A 11T-16/32DP Ansi B92 1a 1976**



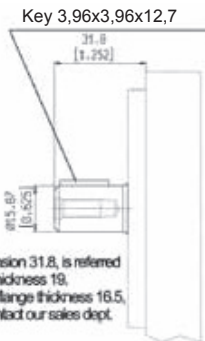
**code 55** Max torque 100 Nm (885 lbf in)  
**SAE B 13T-16/32DP Ansi B92 1a 1976**



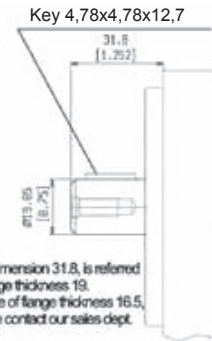
**code 62** Max torque 120 Nm (1062 lbf in)  
**DIN 5482 splined 9T**



**code 60** Max torque 100 Nm (885 lbf in)  
**DIN 5480 internal splined**



**code 82** Max torque 70 Nm (620 lbf in)  
**5/8" SAE A parallel**

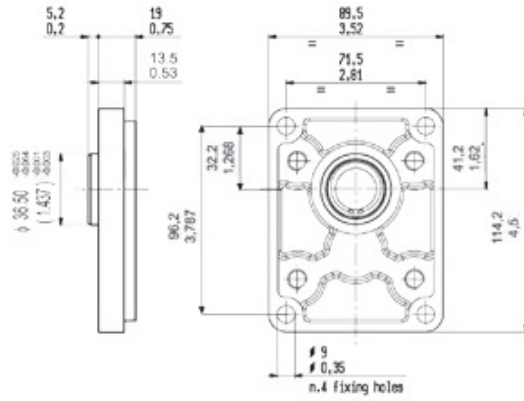


**code 85** Max torque 130 Nm (1151 lbf in)  
**3/4" SAE A parallel**

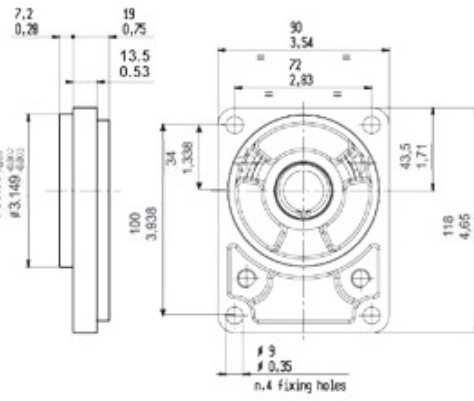
EO.120.0416.02.001M02



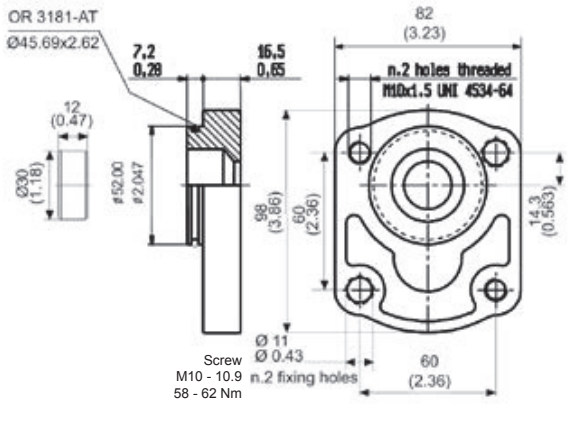
## MOUNTING FLANGES



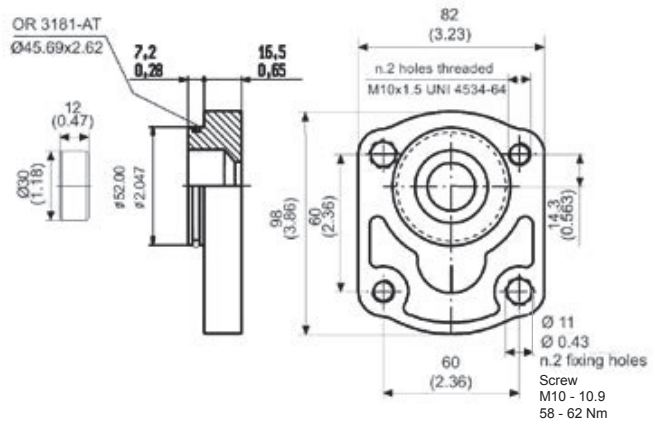
**P1** European standard  
With shaft code 28-62-82



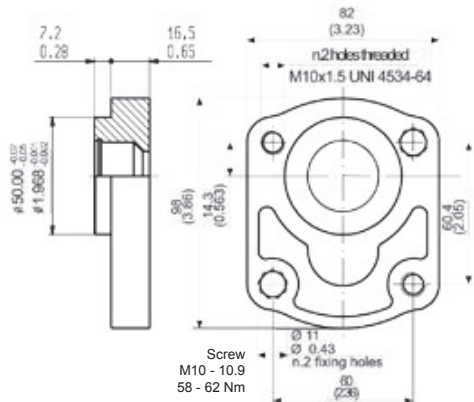
**B1** German standard  
With shaft code 25-62



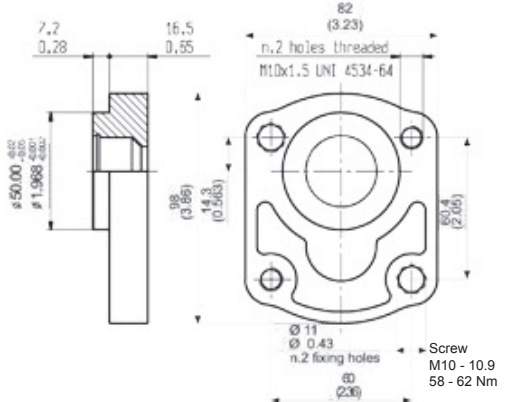
**B2** German standard  
With shaft code 03



**B3** German standard  
With shaft code 03



**B4** German standard  
With shaft code 25-62-04

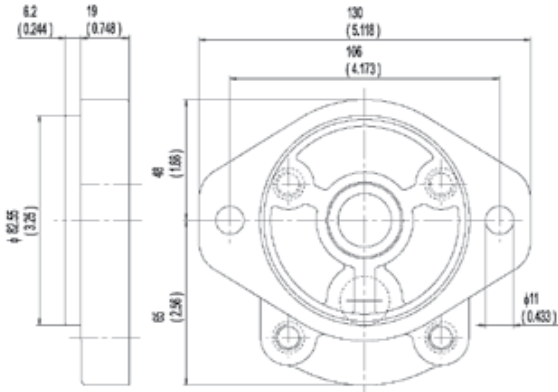


**B5** German standard  
With shaft code 25-62-04

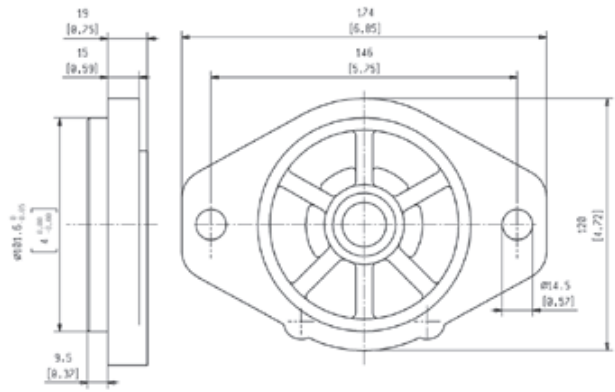
E0.120.0416.02.00IM02



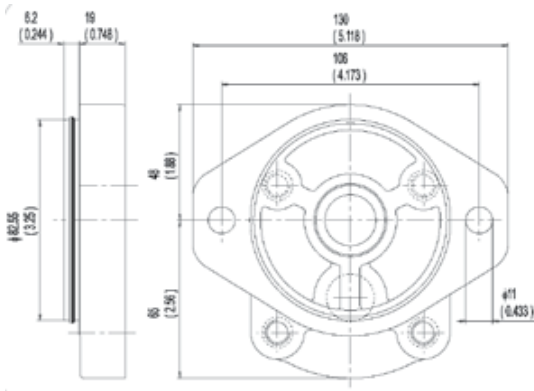




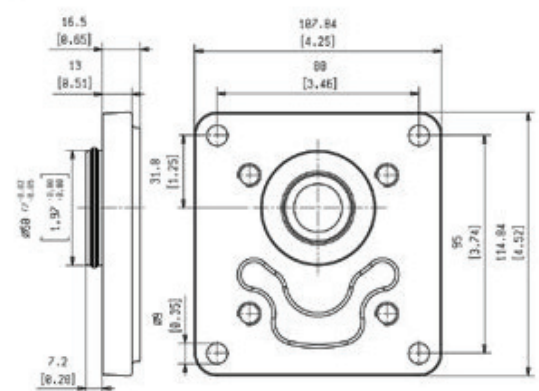
**S2** SAE A 2 bolts  
With shaft code 52-53-54-82-85



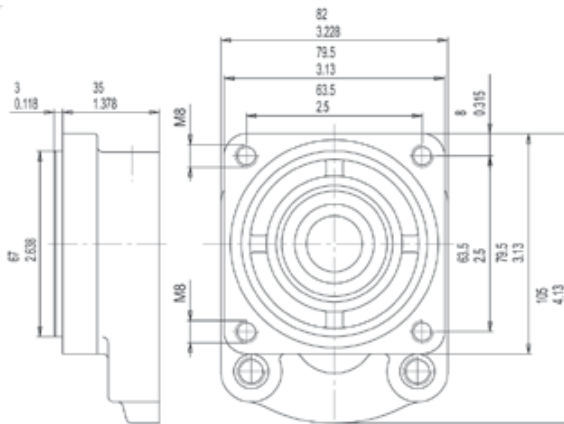
**S3** SAE B 2 bolts  
With shaft code 52-54-55-82-85



**S6** SAE A 2 bolts  
(with O-ring on the centering collar)  
With shaft code 52-54-82-85



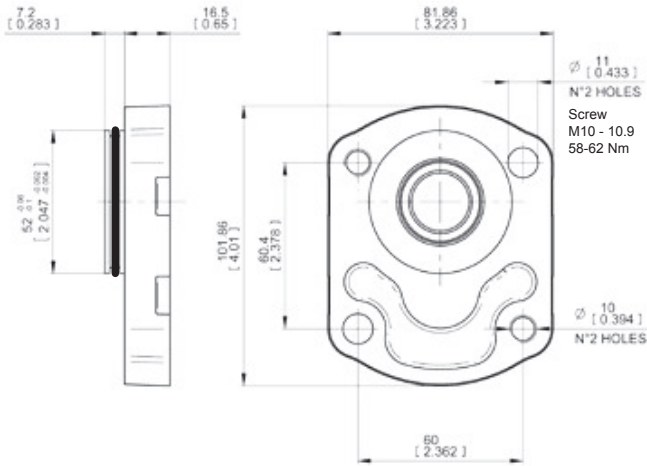
**C1** 4 bolts for Iveco engines  
With shaft code 62



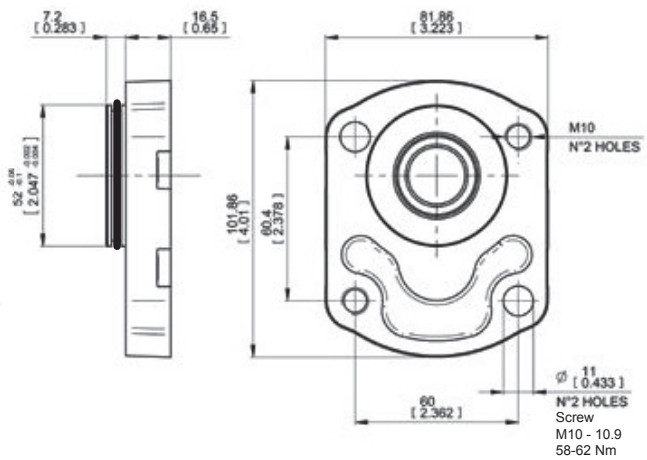
**K1** 4 bolts for Perkins Motor  
With shaft code 02

EO.120.0416.02.001M02



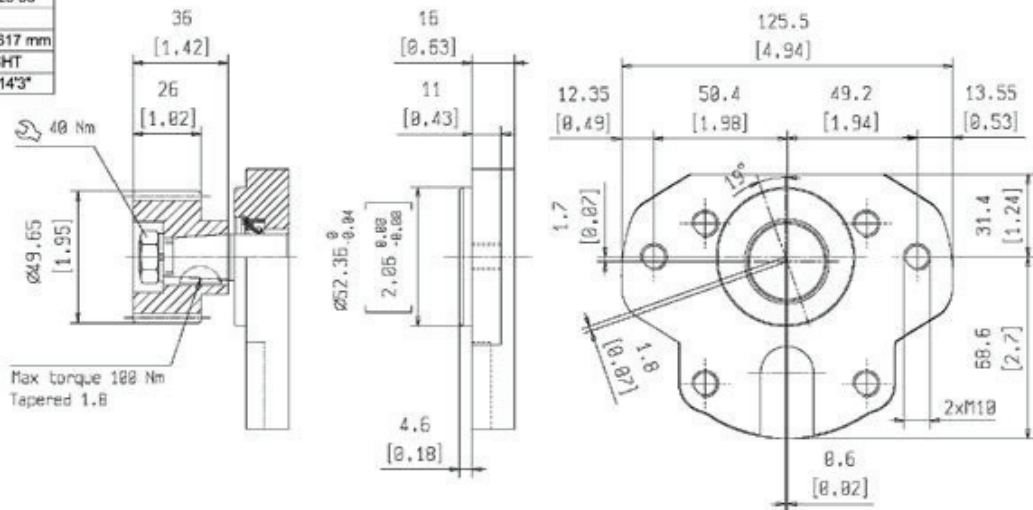


**K3** German standard with shaft seal  
With shaft code 52



**K4** German standard with shaft seal  
With shaft code 52

PINION GEAR CODE 3122 025 30	
NUMBER OF TEETH	20
BASE CIRCLE DIAMETER	42.617 mm
HAND OF HELIX	RIGHT
HELIX ANGLE	13°14'3"



**MF** Perkins Motor  
With shaft code 28

E0.120.0416.02.00IM02

