

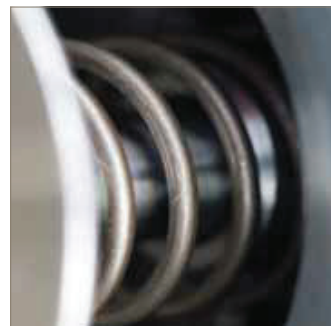


aerospace
climate control
electromechanical
filtration
fluid & gas handling
hydraulics
pneumatics
process control
sealing & shielding



Bladder Accumulators

EHV from 250 to 690 bar



ENGINEERING YOUR SUCCESS.

Technical Characteristics

EHV Range from 0.2 to 10 Litres

Range 350 bar

Type	Effective Gas vol. Litres	Work pressure (PS) bar	Max Flow Rate l/min	Weight in kg	Clamps x (quantity)	O-ring + anti-extrusion ring	Support bracket	Fixation assembly	Dimensions in mm							
									A max height	B	C	øD max	ød	øE	F on flats	G connection
EHV 0,2 - 350/00*	0.17	350	120	2.5	A 56x1	consult page 10	-	-	268	38	24	58	16	39	24	G ½"
EHV 0,5 - 350/00*	0.60	350	240	3	E 95x1		-	-	259	54	28	91	16	50	32	G ¾"
EHV 1 - 350/00*	1	350	240	6	E 114x1		CE 89	-	330	54	66	116	22.5	50	32	G ¾"
EHV 1,6 - 350/90	1.6	350	240	8	E 114x1		CE 89	-	442	54	66	116	22.5	50	32	G ¾"
EHV 2,5 - 350/90	2.4	350	450	11	E 114x2		CE 89	-	549	66	66	116	22.5	68	50	G 1 ¼"
EHV 4 - 350/90	3.7	350	450	15	E 168x1		CE 108	EF1	434	65	66	170	22.5	68	50	G 1 ¼"
EHV 5 - 350/90	5	350	450	17	E 114x2		CE 89	-	898	66	66	115	22.5	68	50	G 1 ¼"
EHV 6 - 350/90	6	350	450	20	E 168x1		CE 108	EF1	560	65	66	170	22.5	68	50	G 1 ¼"
EHV 10 - 350/90	10	350	450	31	E 168x2		CE 108	EF1	825	65	66	170	22.5	68	50	G 1 ¼"

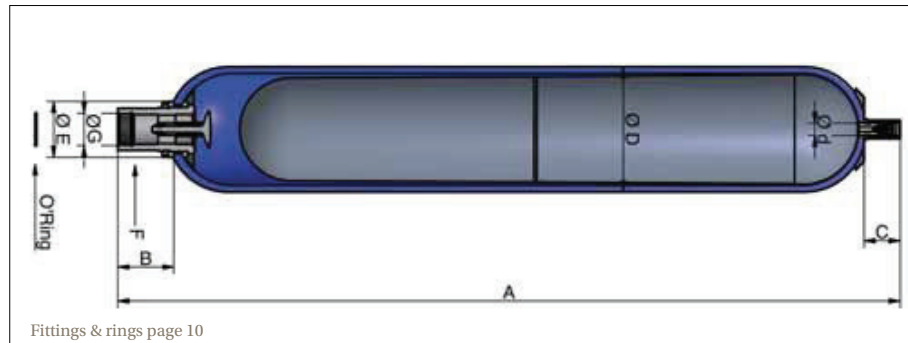
* According to the PED, article 3.3

Range 690 bar

Type	Effective Gas vol. Litres	Work pressure (PS) bar	Max Flow Rate l/min	Weight in kg	Clamps x (quantity)	O-ring + anti-extrusion ring	Support bracket	Dimensions in mm							
								A max height	B	C	øD max	ød	øE	F on flats	G connection**
EHV 1 - 690/90*	1.1	690	360	8.9	E 114x1	consult page 10	CE 89	376	68	69	122	22.5	68	45	G 1"
EHV 2,5 - 690/90	2.4	690	360	15	E 114x2		CE 89	551	68	69	122	22.5	68	45	G 1"
EHV 5 - 690/90	5	690	360	29	E 114x2		CE 89	900	68	69	122	22.5	68	45	G 1"

* According to the PED, article 3.3

**With the special adaptor



For alternative gas valves, see page 8.

Above dimensions are in mm and are subject to manufacturing tolerances.

EHV Range from 10 to 50 Litres

Range 330 bar

Type	Effective Gas vol. Litres	Work pressure (PS) bar	Max Flow Rate l/min	Weight in kg	Clamps x (quantity)	O-ring + anti-extrusion ring	Support bracket	Fixation assembly	Dimensions in mm							
									A max height	B	C	øD max	ød	øE	F on flats	G connection
EHV 10 - 330/90	9.2	330	900	31	D 226x2	consult page 10	CE 159A	EF2	587	103	66	226	22.5	101	70	G 2"
EHV 12 - 330/90	11	330	900	36	D 226x2		CE 159A	EF2	687	103	66	226	22.5	101	70	G 2"
EHV 20 - 330/90	17.8	330	900	49	D 226x2		CE 159A	EF2	897	103	66	226	22.5	101	70	G 2"
EHV 24.5 - 330/90	22.5	330	900	56	D 226x2		CE 159A	EF2	1032	103	66	226	22.5	101	70	G 2"
EHV 32 - 330/90	32	330	900	81	D 226x2		CE 159A	EF3	1420	103	66	226	22.5	101	70	G 2"
EHV 42 - 330/90	42	330	900	87	D 226x2		CE 159A	EF3	1562	103	66	226	22.5	101	70	G 2"
EHV 50 - 330/90	48.5	330	900	110	D 226x2		CE 159A	EF3	1936	103	66	226	22.5	101	70	G 2"
EHV 57 - 330/90	53	330	900	116	D 226x2		CE 159A	EF3	1936	103	66	226	50	101	70	G 2"

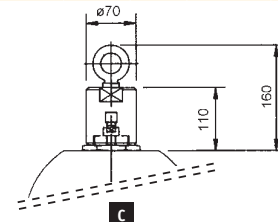
Range 480 bar

Type	Effective Gas vol. Litres	Work pressure (PS) bar	Max Flow Rate l/min	Weight in kg	Clamps x (quantity)	O-ring + anti-extrusion ring	Support bracket	Fixation assembly	Dimensions in mm							
									A max height	B	C	øD max	ød	øE	F on flats	G connection
EHV 10 - 480/90	9.2	480	900	33	D 226x2	consult page 10	CE 159A	EF2	593	103	74	228	22.5	101	70	G 2"
EHV 12 - 480/90	11	480	900	43	D 226x2		CE 159A	EF2	693	103	74	228	22.5	101	70	G 2"
EHV 20 - 480/90	17.8	480	900	63	D 226x2		CE 159A	EF2	903	103	74	228	22.5	101	70	G 2"
EHV 32 - 480/90	32	480	900	97	D 226x2		CE 159A	EF3	1428	103	74	228	22.5	101	70	G 2"
EHV 50 - 480/90	48.5	480	900	132	D 226x2		CE 159A	EF3	1967	103	99	228	51	101	70	G 2"

Range 690 bar

Type	Effective Gas vol. Litres	Work pressure (PS) bar	Max Flow Rate l/min	Weight in kg	Clamps x (quantity)	O-ring + anti-extrusion ring	Support bracket	Dimensions in mm						
								A max height	B	øD max	ød Stem	øE	F on flats	G connection *
EHV 12 - 690/90	11	690	900	97	11060x2	consult page 10	11061	682	84	267	50	110	77	G 2"
EHV 20 - 690/90	16.5	690	900	134	11060x2		11061	872	84	267	50	110	77	G 2"
EHV 37 - 690/90	33.4	690	900	227	11060x2		11061	1417	84	267	50	110	77	G 2"
EHV 54 - 690/90	53	690	900	318	11060x2		11061	1932	84	267	50	110	77	G 2"

* Requires a special adaptor



Above dimensions are in mm and are subject to manufacturing tolerances.