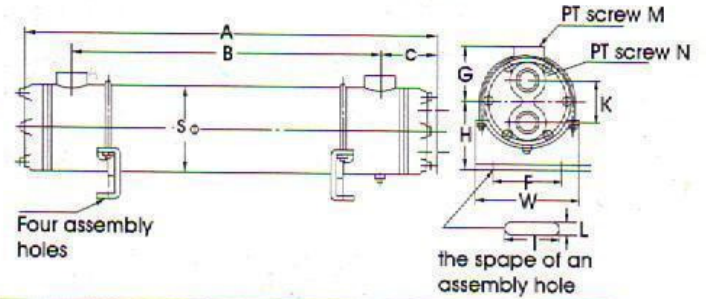


直管式

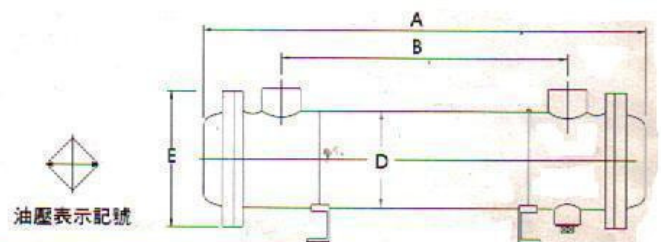
OIL-COOLER



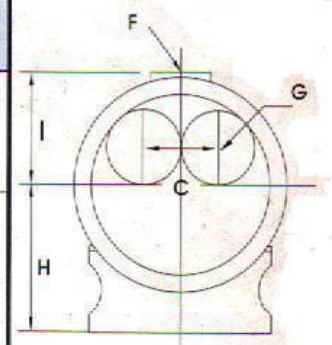
型式	A	B	C	G	H	K	M	N	S	W	F	L/MIN	kg
HT-0905	590	408	88	63	77	47	3/4"	3/4"	89.1	115.5	95	60	8
0908	880	720	78									100	12
1405	600	398	100									150	18
1408	890	710	85	95	118	58	1 1/4"	1 1/4"	139.8	175	130	250	22
1412	1300	1110	100									350	33
1712	1335	1060	138									600	43
1716	1745	1510	138	107	136	64	2"	1 1/2"	165.2	205	161	850	54
1720	2145	1850	138									1050	66

大流量

OIL-COOLER



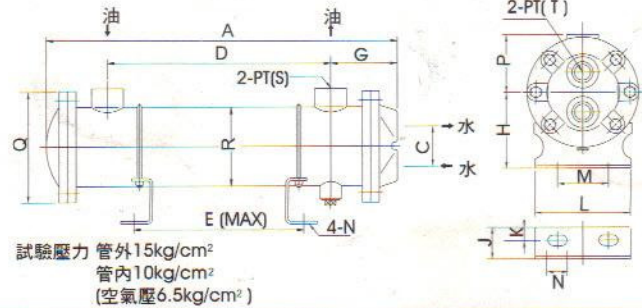
型式	A	B	C	D	E	F	G	H	I
HT-2212	1355	1060	92	217	269	2"	2"	184	134
2216	1790	1490							
2230	2170	1800							
2508	1000	700	112	275	302	2"	2"	218	163
2512	1365	1060							
2516	1800	1470							
2522	2180	1800							



1200 l/min
1500 l/min
1800 l/min
1000 l/min
1600 l/min
1800 l/min
2200 l/min

ST系列

OIL-COOLER



試驗壓力 管外15kg/cm²
管內10kg/cm²
(空氣壓6.5kg/cm²)

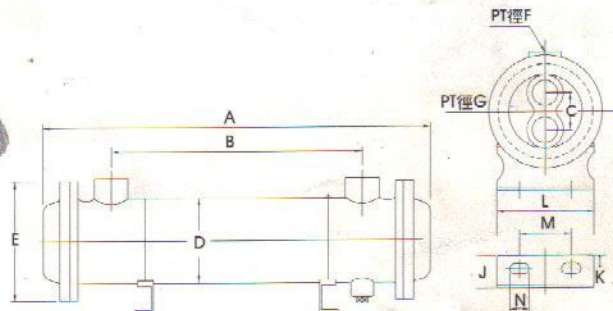
型式	A	C	D	E	G	H	J	K	L	M	N	P	Q	R	S	T
ST-303	299	46	150	100	90	77	23	11	115.5	95	7×10	63	121	89.1	3/4"	3/4"
304	390		225	175												
305	455		295	235								1				
307	598		440	380												
309	755		584	525												
311	898		728	675												
ST-408	477	74	284	215	102	103	33	12.5	145.5	106.5	10×20	77	150	114.3	1 1/4"	3/4"
411	623		428	360												
415	780		572	500												
418	920		716	650												
421	1065		860	790												
424	1226		1020	950												
ST-522	780	76	558	480	110	118	30	12.5	175	130	13×16	95	174.8	139.8	1 1/2"	1"
526	850		622	540												
527	924		702	620												
534	1080		838	760												
542	1244		1010	975												
544	1460		1228	1150												
ST-649	1093	87	836	735	134	136	34	12.5	205	161	13×16	107	207	165.2	2"	1 1/4"
657	1255		1000	900												
668	1475		1218	1120												
682	1747		1490	1390												
6104	2167		1910	1810												

多管式

OIL-COOLER



油壓表示記號



型式	A	B	C	D	E	F	G	J	K	L	M	N	散熱管	流量	kg
OR-60	450	305	46	89.1	121	3/4"	3/4"	23	11	115.5	95	7×10	22	60	8.5
100	555	403	57	101.6	134	3/4"	3/4"	33	12.5	145.5	106.5	10×20	26	100	11.1
150	575	385	76	139.8	175	1 1/4"	1"	30	12.5	175	130	13×16	42	150	19
250	780	585											58	250	24
350	1180	990	87	165.2	207	2"	1 1/4"	34	12.5	205	161	13×16	58	350	32.5
600	1175	950											58	600	40
800	1700	1490	1910	1810	207	2"	1 1/4"	34	12.5	205	161	13×16	58	800	54
1000	2135	1910											58	1000	62