

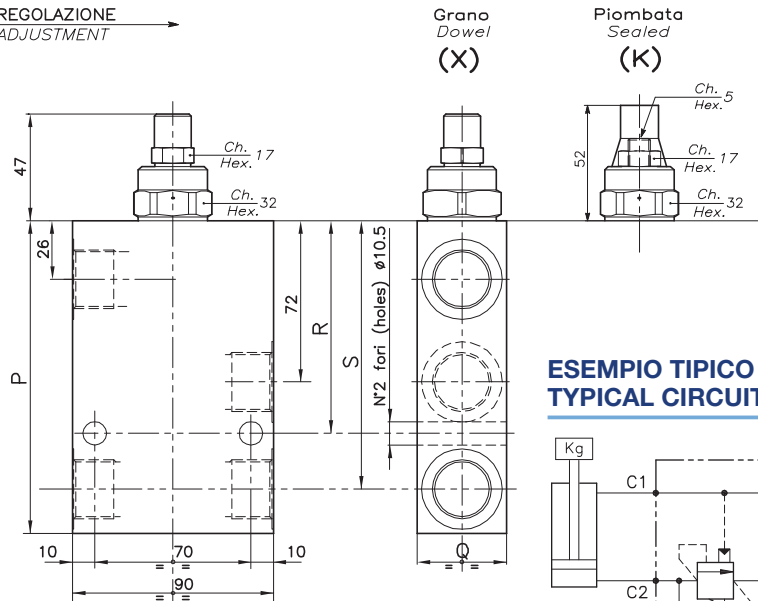
LUEN

DIIT Group

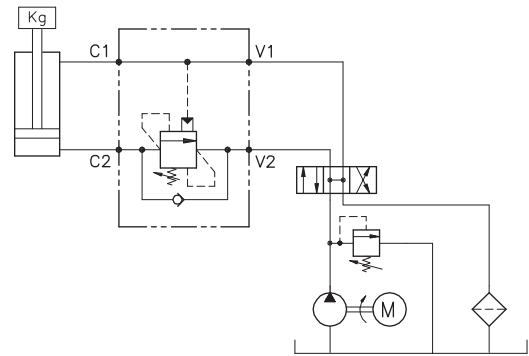


VALVOLE DI BILANCIAMENTO
E BLOCCO
COUNTERBALANCE VALVES

REGOLAZIONE
ADJUSTMENT →



ESEMPIO TIPICO DI CIRCUITO TYPICAL CIRCUIT EXAMPLE



DIMENSIONI DIMENSIONS

Campo taratura Setting range	P	Q	R	S	Attacchi Port size V2-C2 V1-C1 GAS (BSPP)	Luce nominale Rated size DN	Portata max Max flow-rate l/min - GPM	Corpo Body
265	140	40	95	120	3/4"	12	120-31	Acciaio Steel
266	165	50	107	142	1"	14	160-42	Acciaio Steel

CODICE DI ORDINAZIONE HOW TO ORDER

001 . 265 . 0 X 0 . A

Campo taratura / Setting range

265

266

Campo taratura 60÷350 bar (molla colore giallo)
Setting range 60÷350 bar (yellow spring)

Taratura standard (Q=5 l/1')

Std. bar setting Q=5 l/1')

250 bar

Incr. press. - bar giro/vite

Pressure rise - turn of screw

(125)

Rapporto
di pilotaggio
Pilot ratios

O 6.2 : 1

G 4.1 : 1

Regolazione
Adjustment

X Grano - Dowel

K Piombata - Sealed

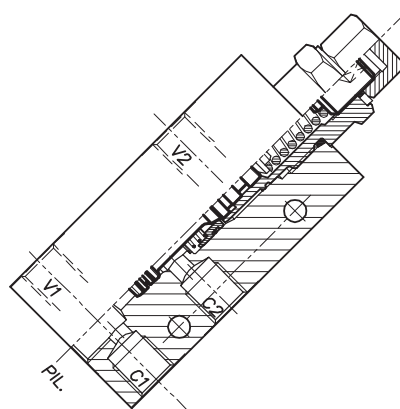
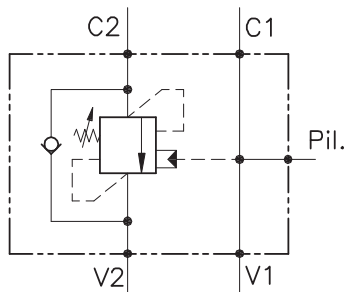
Collettore
Body

A Acciaio
zincato
Zinc plated
steel

OWC-30-SE-14-L

VALVOLA BILANCIAMENTO, BLOCCO E CONTROLLO MOVIMENTO A SEMPLICE EFFETTO CON COLLETTORE IN LINEA

SINGLE COUNTERBALANCE VALVE WITH IN LINE BODY



CARATTERISTICHE

Luca nominale
 Portata min/max
 Pressione max. di picco
 Pressione max. di taratura
 Rapporto di pilotaggio standard
 Temperatura ambiente
 Temperatura olio
 Filtraggio consigliato
 Coppia di serraggio
 Peso

DN 6
1/25 l/min - 0.26/6.6 GPM
450 bar - 6525 PSI
350 bar - 5075 PSI
4 : 1
-30°C + 50°C
-30°C + 80°C
30 micron
0.300 Kg

PERFORMANCE

Rated size
 Min/max flow-rate
 Max peak pressure
 Max setting pressure
 Standard pilot ratio
 Room temperature
 Oil temperature
 Recommended filtration
 Tightening torque
 Weight

NOTE:

La taratura deve essere **1.3** volte maggiore della pressione indotta dal carico.

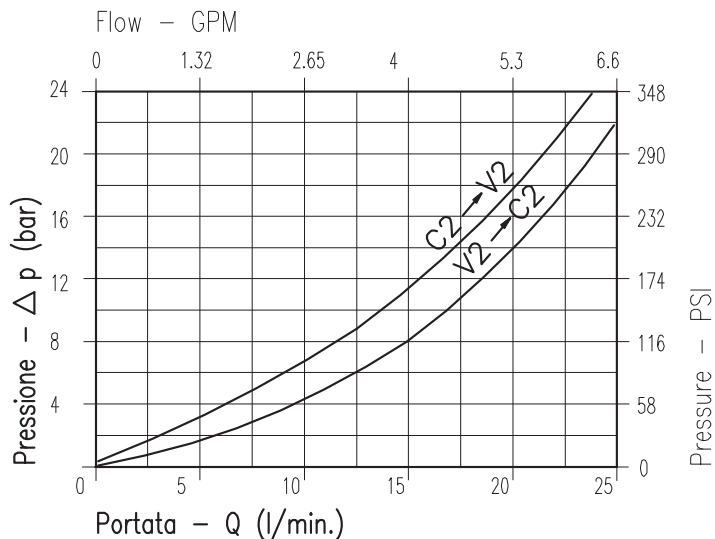
Valve should be set at **1.3** times load induced pressure.

ESEMPIO/EXAMPLE:

Pressione di lavoro max:

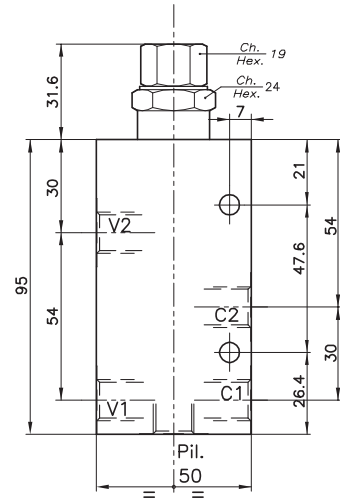
Max working pressure:

350 bar / 1.3 = 270 bar

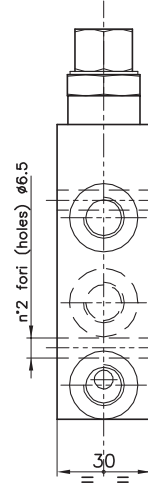


Viscosità olio 46 cSt a 50°C
 Oil viscosity 46 cSt at 50°C

REGOLAZIONE
ADJUSTMENT →



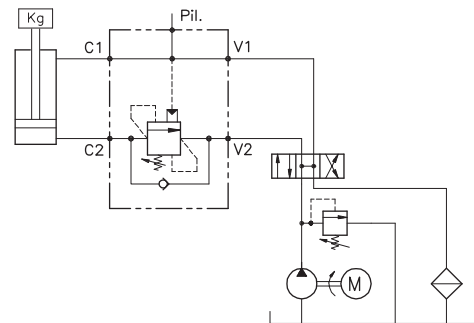
Grano
Dowel
(X)



DIMENSIONI DIMENSIONS

Campo taratura Setting range	Attacchi Port size V2-C2 V1-C1-PIL GAS (BSPP)	Luce nominale Rated size	Portata max Max flow-rate
623	1/4"	DN 6	l/min - GPM 25-6

ESEMPIO TIPICO DI CIRCUITO TYPICAL CIRCUIT EXAMPLE



CODICE DI ORDINAZIONE HOW TO ORDER

001 . 623 . 0 X 0 . A

Campo taratura / Setting range

623

Campo taratura 60÷350 bar (molla colore giallo)
Setting range 60÷350 bar (yellow spring)

Taratura standard (Q=5 l/1')
Std. bar setting Q=5 l/1')

250 bar

Incr. press. - bar giro/vite
Pressure rise - turn of screw
(75)

Rapporto di pilotaggio
Pilot ratios
O 4 : 1
F 7 : 1

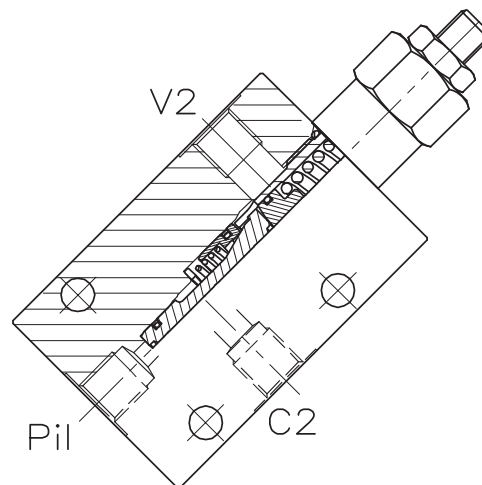
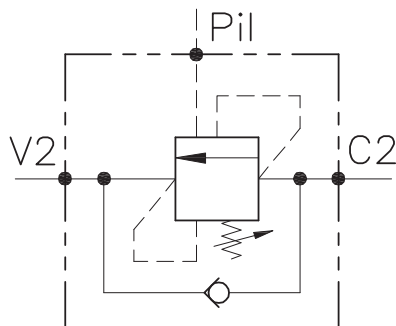
Regolazione
Adjustment
X Grano - Dowel

Collettore
Body
A Acciaio zincato
Zinc plated steel

A-WB-C-SE-...-14-...-...

VALVOLA BILANCIAMENTO, BLOCCO E CONTROLLO MOVIMENTO CON PILOTAGGIO ESTERNO

COUNTERBALANCE VALVE WITH EXTERNAL PILOT



CARATTERISTICHE

Luca nominale	DN 6/8/10
Portata min/max	1/60 l/min - 0.26/15.9 GPM
Pressione max. di picco	450 bar - 6525 PSI
Pressione max. di taratura	350 bar - 5075 PSI
Rapporto di pilotaggio standard	4.25 : 1
Temperatura ambiente	-30°C + 50°C
Temperatura olio	-30°C + 80°C
Filtraggio consigliato	30 micron
Coppia di serraggio	
Peso	

PERFORMANCE

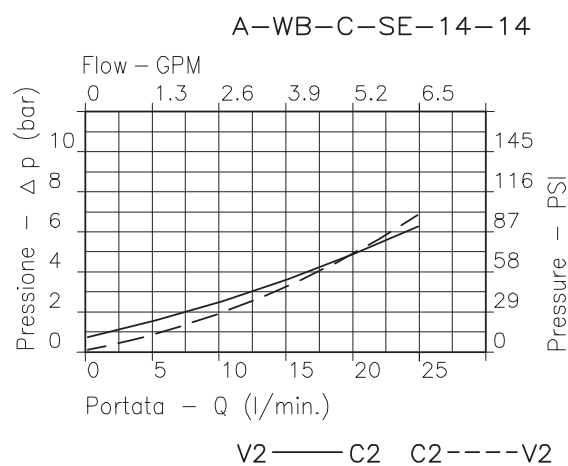
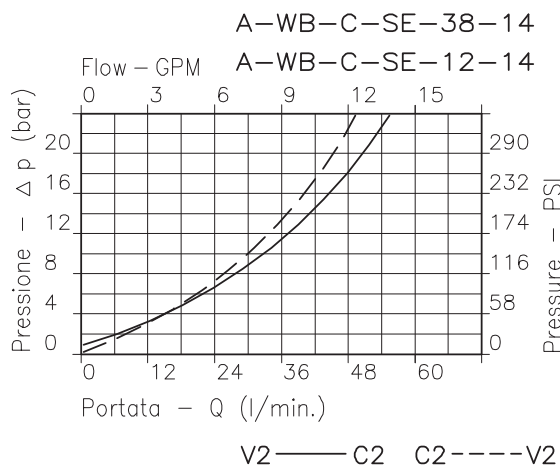
Rated size
Min/max flow-rate
Max peak pressure
Max setting pressure
Standard pilot ratio
Room temperature
Oil temperature
Recommended filtration
Tightening torque
Weight

NOTE:

La taratura deve essere 1.3 volte maggiore della pressione indotta dal carico. Valve should be set at 1.3 times load induced pressure.

ESEMPIO/EXAMPLE:

Pressione di lavoro max **350 bar / 1.3 = 270 bar** Max working pressure
 Fornitura standard valvola: corpo in acciaio. A richiesta corpo in alluminio. Steel body valves as standard, aluminium body on request

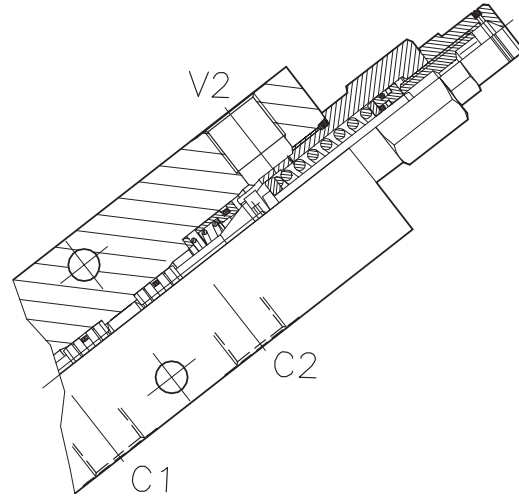
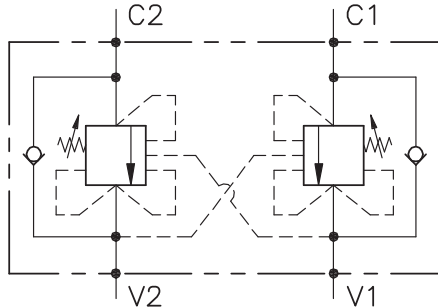


Viscosità olio 46 cSt a 50°C - Oil viscosity 46 cSt at 50°C

A-WB-CC-DE-LU-...-...

VALVOLA BILANCIAMENTO, BLOCCO E CONTROLLO MOVIMENTO A DOPPIO EFFETTO, CON COLLETTORE IN LINEA

DOUBLE COUNTERBALANCE VALVE FOR CLOSED CENTRE SPOOL WITH IN LINE BODY



CARATTERISTICHE

Luca nominale	DN 6/8/10
Portata min/max	1/25 l/min - 0.26/6.6 GPM
Pressione max. di picco	350 bar - 5075 PSI
Pressione max. di taratura	350 bar - 5075 PSI
Rapporto di pilotaggio standard	4.25 : 1
Temperatura ambiente	-30°C + 50°C
Temperatura olio	-30°C + 80°C
Filtraggio consigliato	30 micron
Coppia di serraggio	
Peso	0.300 Kg

PERFORMANCE

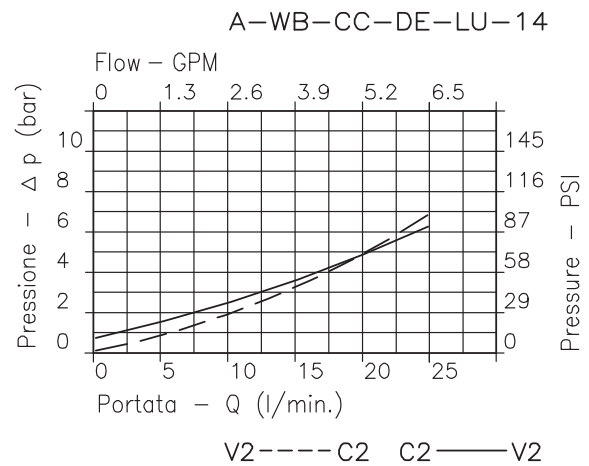
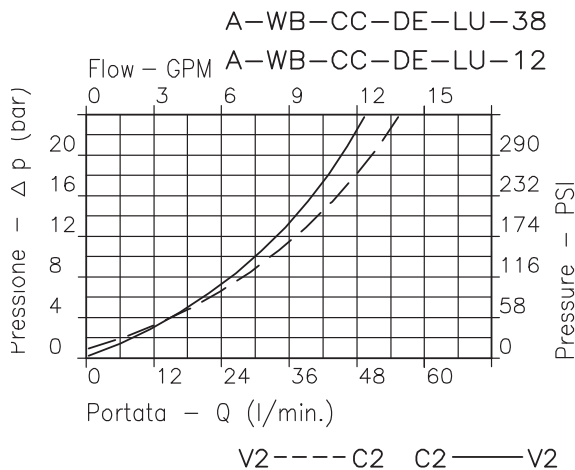
Rated size
Min/max flow-rate
Max peak pressure
Max setting pressure
Standard pilot ratio
Room temperature
Oil temperature
Recommended filtration
Tightening torque
Weight

NOTE:

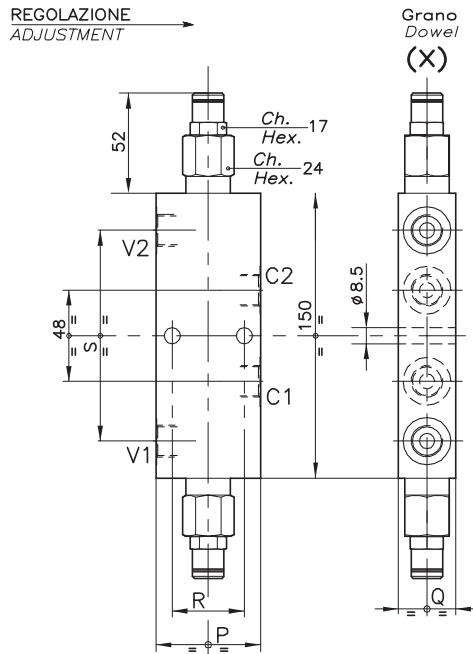
La taratura deve essere 1.3 volte maggiore della pressione indotta dal carico. Valve should be set at 1.3 times load induced pressure.

ESEMPIO/EXAMPLE:

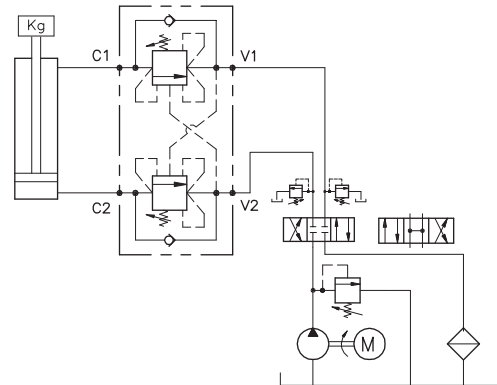
Pressione di lavoro max **350 bar / 1.3 = 270 bar** Max working pressure
 Fornitura standard valvola: corpo in acciaio. A richiesta corpo in alluminio. Steel body valves as standard, aluminium body on request



Viscosità olio 46 cSt a 50°C - Oil viscosity 46 cSt at 50°C



ESEMPIO TIPICO DI CIRCUITO TYPICAL CIRCUIT EXAMPLE



DIMENSIONI DIMENSIONS

Campo taratura Setting range		P	Q	R	S	Attacchi Port size V2-C2 V1-C1 GAS (BSP)	Luce nominale Rated size DN	Portata max Max flow-rate l/min - GPM
460	459	55	30	38	109.6	3/8"	8	40-10
462	461	65	35	43	112	1/2"	10	60-15

CODICE DI ORDINAZIONE HOW TO ORDER

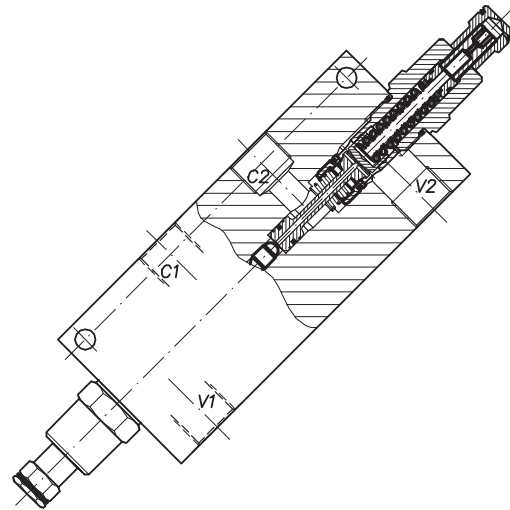
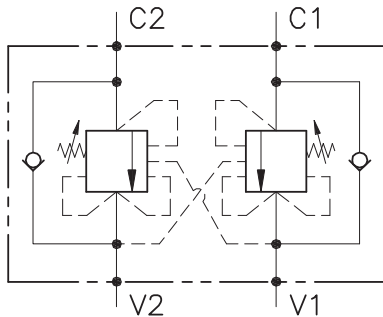
001 . 460 . 0 X 0 . A

Campo taratura / Setting range		Rapporto di pilotaggio Pilot ratios		Regolazione Adjustment	Collettore Body
460	459	O	4.25 : 1	X	A
462	461	D	8 : 1	Grano - Dowel	Acciaio zincato Zinc plated steel
Campo taratura 30÷220 bar (molla colore verde) Setting range 30÷220 bar (green spring)	Campo taratura 60÷350 bar (molla colore rosso) Setting range 60÷350 bar (red spring)	Taratura standard (Q=5 l/1') Std. bar setting (Q=5 l/1') 180 bar	Incr. press. - bar giro/vite Pressure rise - turn of screw (60)	Taratura standard (Q=5 l/1') Std. bar setting (Q=5 l/1') 250 bar	Incr. press. - bar giro/vite Pressure rise - turn of screw (140)
		461	Collettore possibile in AL togliendo "A"		
		462	Available aluminium body without "A"		
		460			
		459			

OWC-DE-...-LU-CC-...

VALVOLA BILANCIAMENTO, BLOCCO E CONTROLLO MOVIMENTO A DOPPIO EFFETTO, CON COLLETTORE IN LINEA

DOUBLE COUNTERBALANCE VALVE FOR CLOSED CENTRE SPOOL WITH IN LINE BODY



CARATTERISTICHE

Luce nominale
 Portata min/max
 Pressione max. di picco
 Pressione max. di taratura
 Rapporto di pilotaggio standard
 Temperatura ambiente
 Temperatura olio
 Filtraggio consigliato
 Peso

DN 12/14
1/160 l/min - 0.26/42.3 GPM
350 bar - 5075 PSI
350 bar - 5075 PSI
6.2 : 1
-30°C + 50°C
-30°C + 80°C
30 micron

PERFORMANCE

Rated size
 Min/max flow-rate
 Max peak pressure
 Max setting pressure
 Standard pilot ratio
 Room temperature
 Oil temperature
 Recommended filtration
 Weight

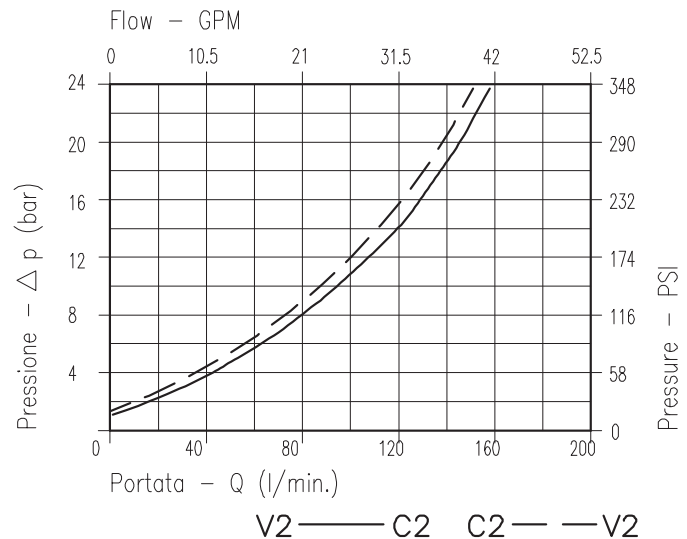
NOTE:

La taratura deve essere **1.3** volte maggiore della pressione indotta dal carico.

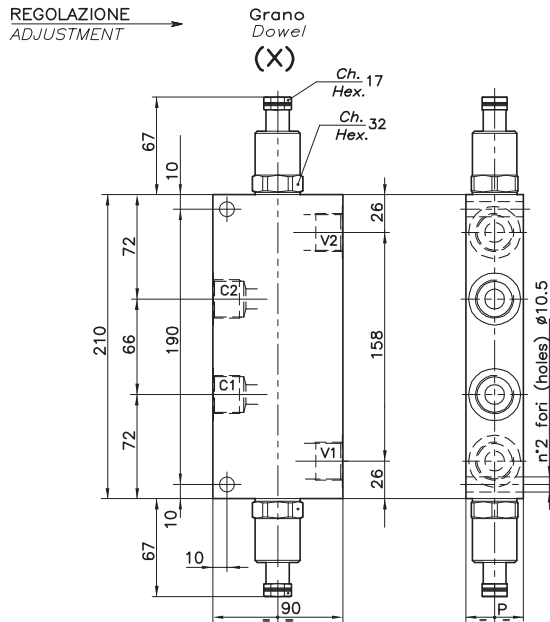
Valve should be set at **1.3** times load induced pressure.

ESEMPIO/EXAMPLE:

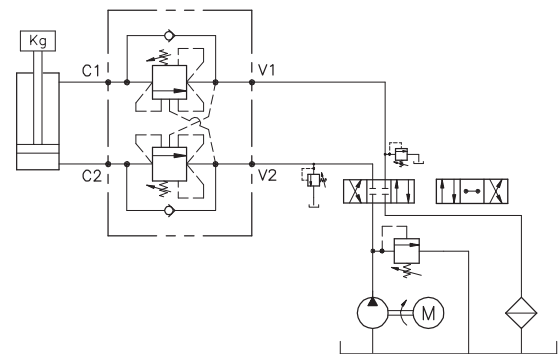
Pressione di lavoro max:
 Max working pressure:
350 bar / 1.3 = 270 bar



Viscosità olio 46 cSt a 50°C
Oil viscosity 46 cSt at 50°C



ESEMPIO TIPICO DI CIRCUITO TYPICAL CIRCUIT EXAMPLE



DIMENSIONI DIMENSIONS

Campo taratura Setting range	P	Attacchi Port size V1-C1 V2-C2 GAS (BSPP)	Luce nominale Rated size DN	Portata max Max flow-rate l/min - GPM
463	40	3/4"	12	120-31
464	50	1"	14	180-47

CODICE DI ORDINAZIONE HOW TO ORDER

001 . 463 . 0 X 0 . A

Campo taratura / Setting range 463 464		Rapporto di pilotaggio Pilot ratios O 6.2 : 1 G 4 : 1	Regolazione Adjustment X Grano - Dowel	Collettore Body A Acciaio zincato Zinc plated steel
Campo taratura 60÷350 bar (molla colore giallo) Setting range 60÷350 bar (yellow spring)				
Taratura standard (Q=5 l/1') Std. bar setting Q=5 l/1') 250 bar	Incr. press. - bar giro/vite Pressure rise - turn of screw (140)			
463		Collettore possibile in AL togliendo "A" Available aluminium body without "A"		