

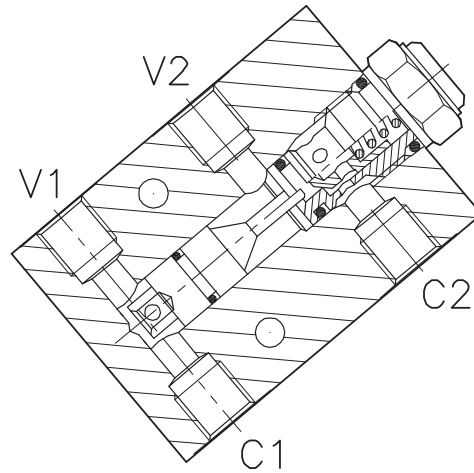
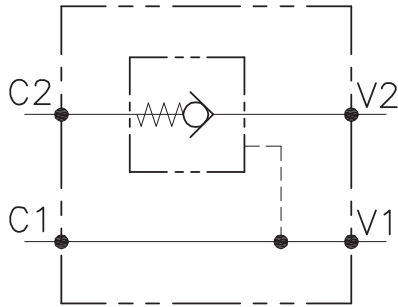


VALVOLE DI BLOCCO  
CON COLLETTORE  
CHECK VALVES WITH BODY

# VNR-C-SO-SE-...-...

VALVOLA DI BLOCCO PILOTATA, A SEMPLICE EFFETTO CON COLLETTORE IN LINEA

SINGLE PILOT, CHECK VALVE WITH IN LINE BODY



## CARATTERISTICHE

Luce nominale min/max	<b>Vedi Pag. 6</b>
Portata min/max	<b>Vedi Pag. 6</b>
Pressione di lavoro max.	<b>350 bar - 5075 PSI</b>
Rapporto di pilotaggio	<b>4 : 1</b>
Temperatura ambiente	<b>-30°C + 50°C</b>
Temperatura olio	<b>-30°C + 80°C</b>
Filtraggio consigliato	<b>50 micron</b>
Peso	<b>0.459 Kg. 1/4" GAS</b>
Peso	<b>0.750 Kg. 3/8" GAS</b>
Peso	<b>0.724 Kg. 1/2" GAS</b>

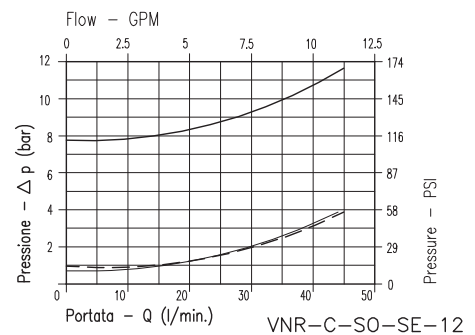
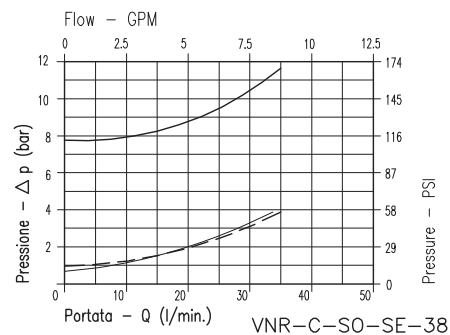
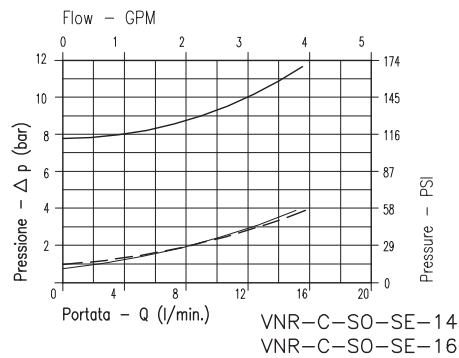
## PERFORMANCE

Min/max rated size
Min/max flow-rate
Max working pressure
Pilot ratio
Room temperature
Oil temperature
Recommended filtration
Weight
Weight
Weight

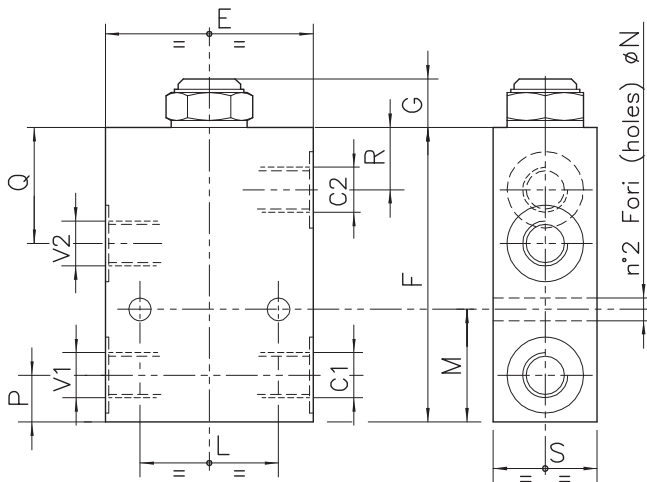
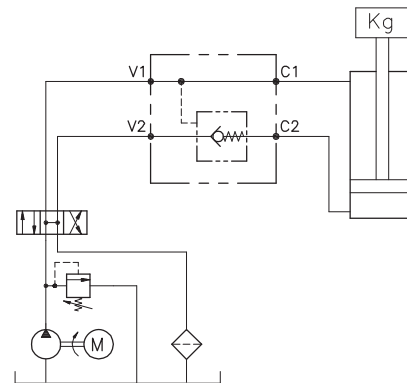
8Bar Flusso libero  
(free flow)

1Bar Flusso libero  
(free flow)

Flusso pilotato  
(piloted flow)



Viscosità olio 46 cSt a 50°C / Oil viscosity 46 cSt at 50°C


 ESEMPIO TIPICO DI CIRCUITO  
 TYPICAL CIRCUIT EXAMPLE

 DIMENSIONI  
 DIMENSIONS

NUMERO VALVOLA VALVE NUMBER	E	F	G	L	M	N	P	Q	R	S	Attacchi Port size V2-C2 V1-C1 GAS (BSPP)	Luce nominale Rated size DN	Portata max Max flow-rate l/min - GPM
036	60	85	15	40	32.5	6.5	13.5	33.5	18	30	1/4"	4	15-4
037	60	85	15	40	32.5	6.5	13.5	33.5	18	30	M16x1.5	4	15-4
038	70	95	18	40	40	8.5	19	38	20.5	35	3/8"	6	35-9.2
039	70	95	18	40	40	8.5	19	38	20.5	35	1/2"	8	45-12

 CODICE DI ORDINAZIONE  
 HOW TO ORDER

003

036

0

J

0

Numero valvola / Valve number

036

037

038

039

 0 mettere nella sigla valvola  
 Do not use in valve code

- A O-RING sul pist. di pilotaggio  
Pilot piston O-RING
- 0 Senza O-RING sul pist. di pilotaggio  
No pilot piston O-RING

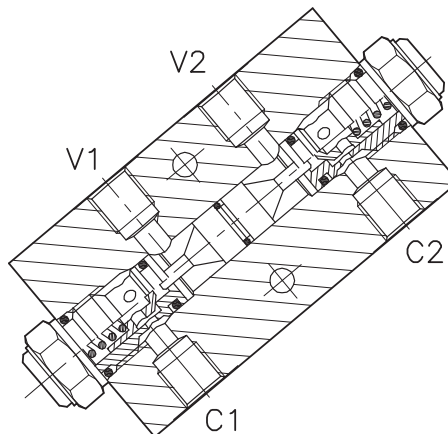
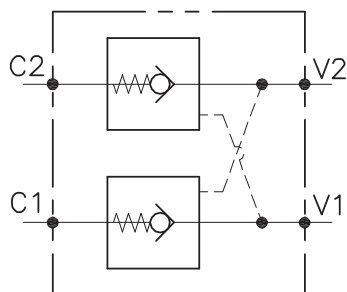
 Inizio apertura  
 Cracking pressure

- J 1 bar  
**Molla (colore nero)**  
**Spring (black)**
- W 6÷8 bar  
**Molla (colore giallo)**  
**Spring (yellow)**

# VNR-C-SO-DE-...-...

VALVOLA DI BLOCCO PILOTATA, A DOPPIO EFFETTO CON COLLETTORE IN LINEA

DOUBLE PILOT CHECK VALVE WITH IN LINE BODY



## CARATTERISTICHE

Luce nominale min/max	<b>Vedi Pag. 18</b>
Portata min/max	<b>Vedi Pag. 18</b>
Pressione di lavoro max.	<b>350 bar - 5075 PSI</b>
Rapporto di pilotaggio	<b>4 : 1</b>
Temperatura ambiente	<b>-30°C + 50°C</b>
Temperatura olio	<b>-30°C + 80°C</b>
Filtraggio consigliato	<b>50 micron</b>
Peso	<b>0.610 Kg. 1/4" GAS</b>
Peso	<b>0.981 Kg. 3/8" GAS</b>
Peso	<b>0.957 Kg. 1/2" GAS</b>

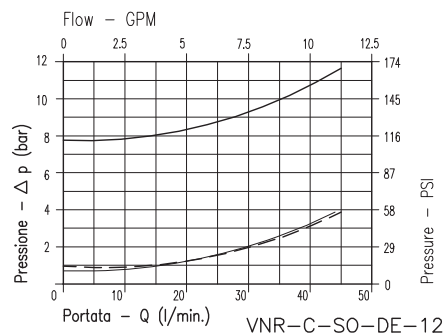
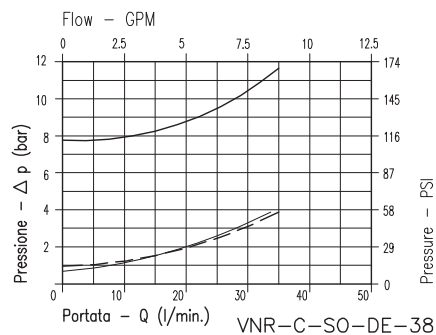
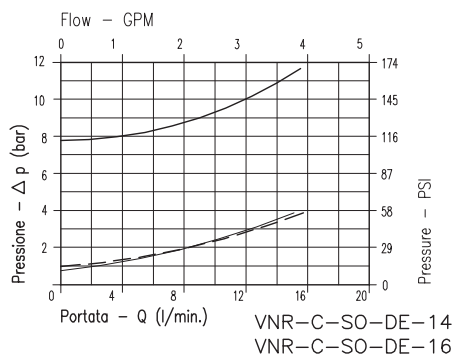
## PERFORMANCE

Min/max rated size
Min/max flow-rate
Max working pressure
Pilot ratio
Room temperature
Oil temperature
Recommended filtration
Weight
Weight
Weight

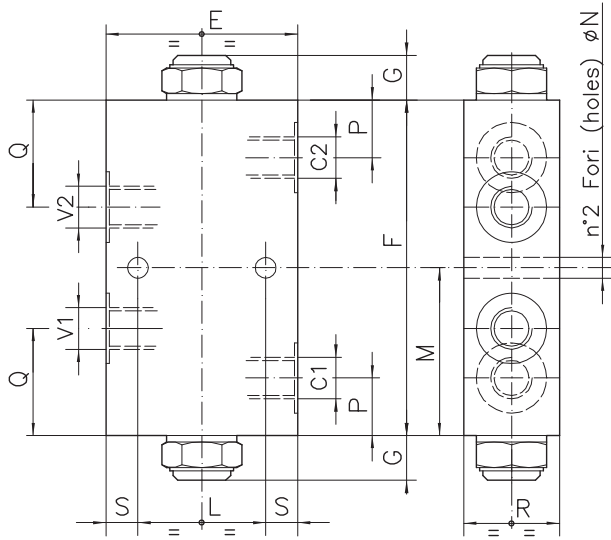
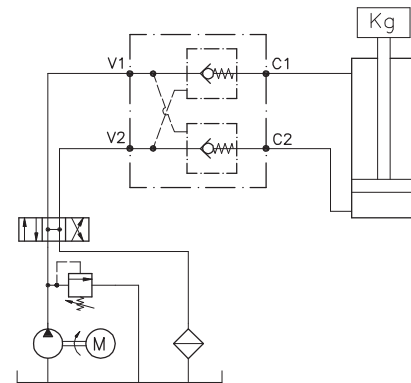
8Bar Flusso libero  
(free flow)

1Bar Flusso libero  
(free flow)

Flusso pilotato  
(piloted flow)



Viscosità olio 46 cSt a 50°C / Oil viscosity 46 cSt at 50°C


**ESEMPIO TIPICO DI CIRCUITO**  
**TYPICAL CIRCUIT EXAMPLE**

**DIMENSIONI**  
**DIMENSIONS**

NUMERO VALVOLA VALVE NUMBER	E	F	G	L	M	N	P	Q	R	S	Attacchi Port size V2-C2 V1-C1 GAS (BSP)	Luce norminale Rated size DN	Portata max Max flow-rate l/min - GPM
047	60	105	15	40	52.5	6.5	18	33.5	30	10	1/4"	4	15-4
048	60	105	15	40	52.5	6.5	18	33.5	30	10	M16x1.5	4	15-4
049	70	110	18	40	55	8.5	20.5	38	35	15	3/8"	6	35-9.2
050	70	110	18	40	55	8.5	20.5	38	35	15	1/2"	8	45-12

**CODICE DI ORDINAZIONE**  
**HOW TO ORDER**

003      047      0      J      0

Numero valvola / Valve number

047

048

049

050

 Omettere nella sigla valvola  
 Do not use in valve code

- A | O-RING sul pist. di pilotaggio  
Pilot piston O-RING
- O | Senza O-RING sul pist. di pilotaggio  
No pilot piston O-RING

 Inizio apertura  
 Cracking pressure

- J | 1 bar  
Molla (colore nero)  
Spring (black)
- W | 6÷8 bar  
Molla (colore giallo)  
Spring (yellow)