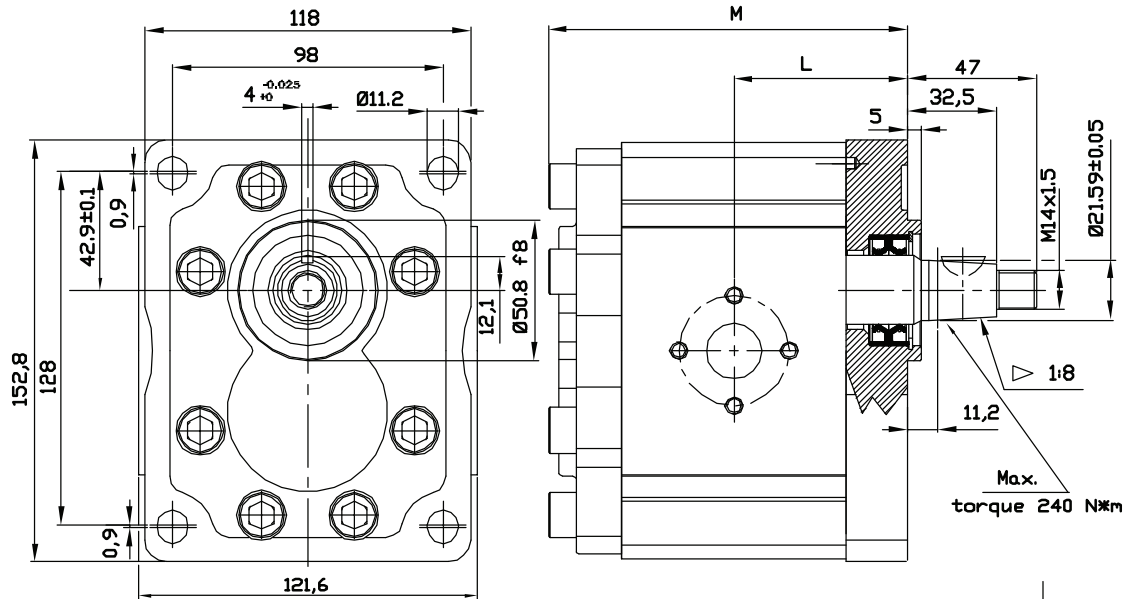
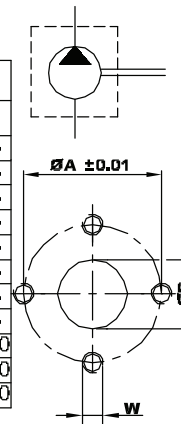


## GROUP 3 PUMPS- EUROPEAN STANDARD

**VERSION: P38 P3**

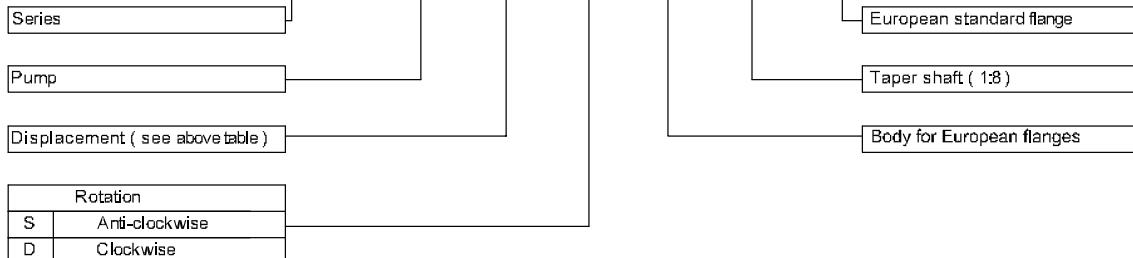


| Type       | Displacement<br>(cc/rev) | Max working<br>pressure P1<br>(bar) | Peak<br>pressure P3<br>(bar) | Max speed<br>(r.p.m) | Dimension<br>L M |       | Inlet port |    |     | Outlet port |    |     |
|------------|--------------------------|-------------------------------------|------------------------------|----------------------|------------------|-------|------------|----|-----|-------------|----|-----|
|            |                          |                                     |                              |                      | (mm)             |       | ØD         | ØA | W   | ØD          | ØA | W   |
| OT 300 P22 | 22                       | 260                                 | 300                          | 3000                 | 57,4             | 119,3 | 27         | 51 | M10 | 19          | 40 | M8  |
| OT 300 P28 | 28                       | 260                                 | 300                          | 3000                 | 59,7             | 123,7 | 27         | 51 | M10 | 19          | 40 | M8  |
| OT 300 P32 | 32                       | 260                                 | 300                          | 3000                 | 61,2             | 126,9 | 27         | 51 | M10 | 19          | 40 | M8  |
| OT 300 P38 | 38                       | 240                                 | 280                          | 3000                 | 63,5             | 131,5 | 27         | 51 | M10 | 19          | 40 | M8  |
| OT 300 P42 | 42                       | 240                                 | 280                          | 3000                 | 65,0             | 134,5 | 27         | 51 | M10 | 19          | 40 | M8  |
| OT 300 P48 | 48                       | 240                                 | 280                          | 3000                 | 72,3             | 149,1 | 27         | 51 | M10 | 19          | 40 | M8  |
| OT 300 P53 | 53                       | 220                                 | 250                          | 3000                 | 74,2             | 152,9 | 27         | 51 | M10 | 19          | 40 | M8  |
| OT 300 P63 | 63                       | 200                                 | 240                          | 2100                 | 78,0             | 160,5 | 27         | 51 | M10 | 19          | 40 | M8  |
| OT 300 P73 | 73                       | 180                                 | 210                          | 2100                 | 81,9             | 168,2 | 36         | 62 | M12 | 27          | 51 | M10 |
| OT 300 P82 | 82                       | 170                                 | 200                          | 2100                 | 85,3             | 175,1 | 36         | 62 | M12 | 27          | 51 | M10 |
| OT 300 P90 | 90                       | 150                                 | 180                          | 2100                 | 88,3             | 181,1 | 36         | 62 | M12 | 27          | 51 | M10 |



### EXAMPLE OF ORDERING CODE

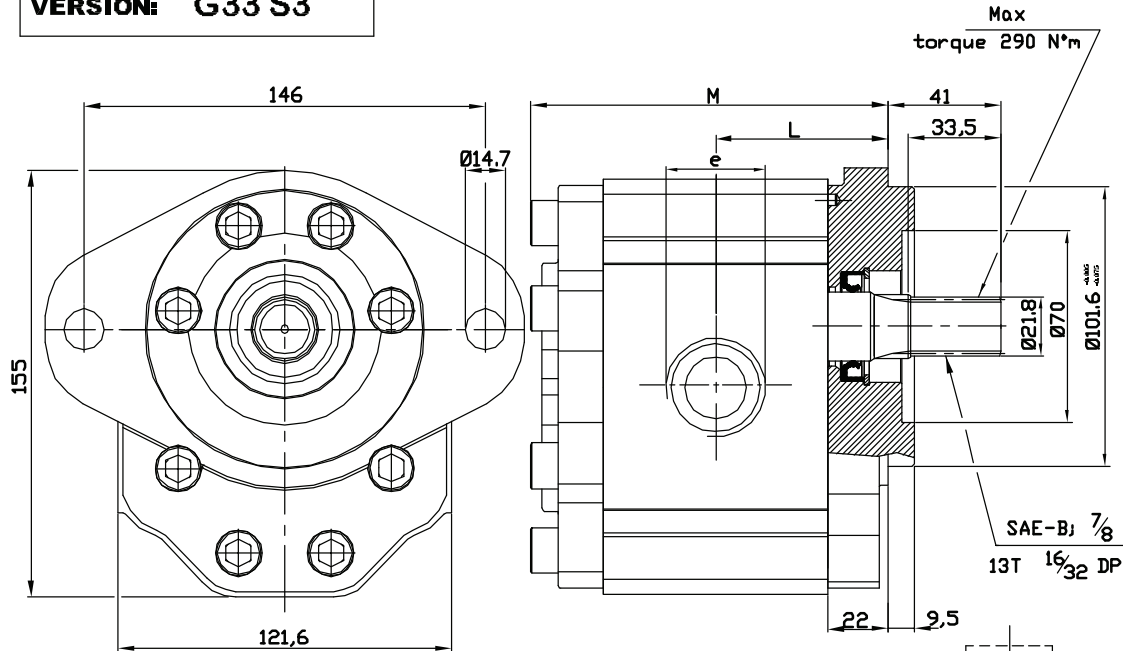
**OT300 P 28 S / P 38 P3**



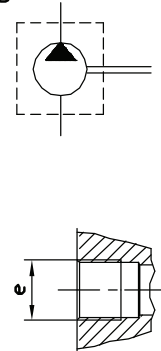
AVAILABLE FOR QUANTITIES

## GROUP 3 PUMPS- SAE B STANDARD

**VERSION: G33 S3**

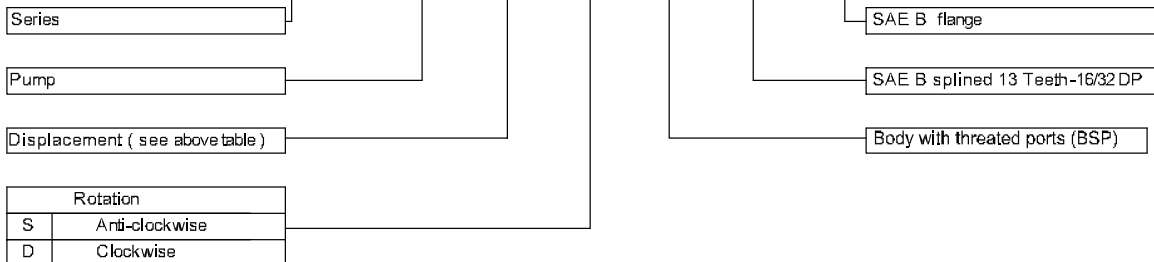


| Type       | Displacement<br>(cc/rev) | Max working<br>pressure P1<br>(bar) | Peak<br>pressure P3<br>(bar) | Max speed<br>(r.p.m) | Dimension<br>L M |       | Inlet<br>port<br>e | Outlet<br>port<br>e |
|------------|--------------------------|-------------------------------------|------------------------------|----------------------|------------------|-------|--------------------|---------------------|
|            |                          |                                     |                              |                      | (mm)             |       |                    |                     |
| OT 300 P22 | 22                       | 260                                 | 300                          | 3000                 | 57,4             | 119,3 | G 1                | G 3/4               |
| OT 300 P28 | 28                       | 260                                 | 300                          | 3000                 | 59,7             | 123,7 | G 1                | G 3/4               |
| OT 300 P32 | 32                       | 260                                 | 300                          | 3000                 | 61,2             | 126,9 | G 1                | G 3/4               |
| OT 300 P38 | 38                       | 240                                 | 280                          | 3000                 | 63,5             | 131,5 | G 1                | G 3/4               |
| OT 300 P42 | 42                       | 240                                 | 280                          | 3000                 | 65,0             | 134,5 | G 1                | G 3/4               |
| OT 300 P48 | 48                       | 240                                 | 280                          | 3000                 | 72,3             | 149,1 | G 1                | G 3/4               |
| OT 300 P53 | 53                       | 220                                 | 250                          | 3000                 | 74,2             | 152,9 | G 1                | G 3/4               |
| OT 300 P63 | 63                       | 200                                 | 240                          | 2100                 | 78,0             | 160,5 | G 1+1/4            | G 3/4               |
| OT 300 P73 | 73                       | 180                                 | 210                          | 2100                 | 81,9             | 168,2 | G 1+1/4            | G 1                 |
| OT 300 P82 | 82                       | 170                                 | 200                          | 2100                 | 85,3             | 175,1 | G 1+1/4            | G 1                 |
| OT 300 P90 | 90                       | 150                                 | 180                          | 2100                 | 88,3             | 181,1 | G 1+1/4            | G 1                 |



### EXAMPLE OF ORDERING CODE

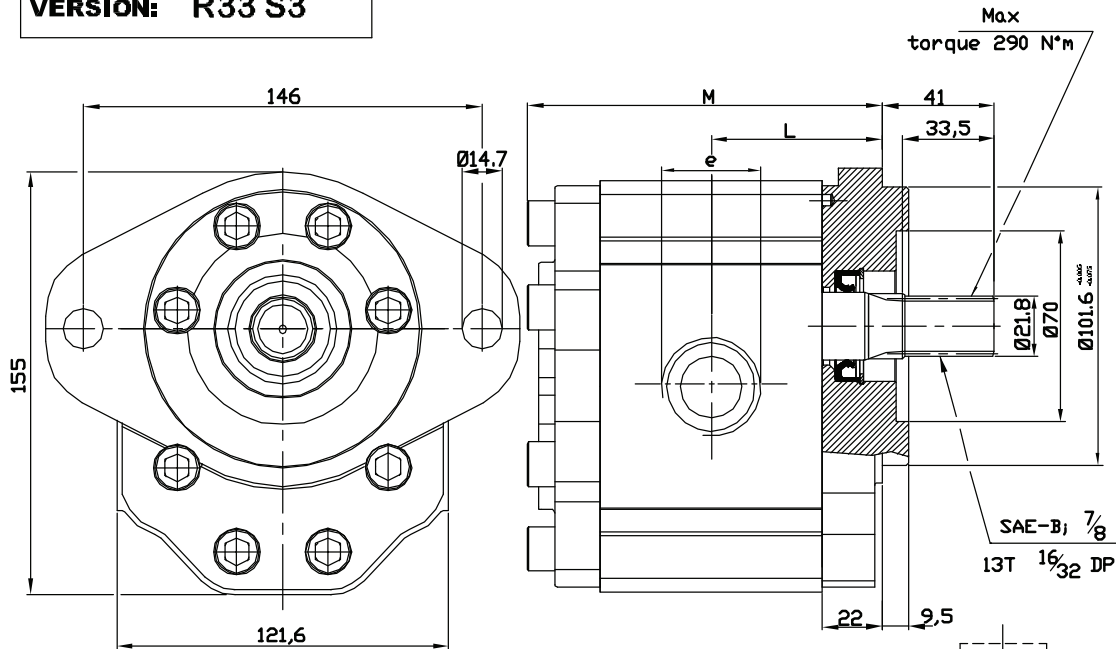
**OT300 P 28 S / G 33 S3**



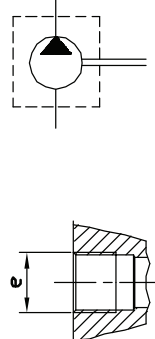
AVAILABLE FOR QUANTITIES

## GROUP 3 PUMPS- SAE B STANDARD

**VERSION: R33 S3**

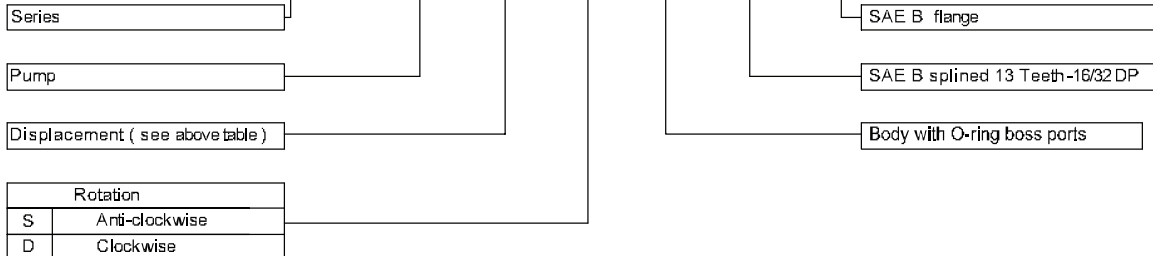


| Type       | Displacement<br>(cc/rev) | Max working pressure P1<br>(bar) | Peak pressure P3<br>(bar) | Max speed<br>(r.p.m) | Dimension<br>L M |       | Inlet port<br>e | Outlet port<br>e |
|------------|--------------------------|----------------------------------|---------------------------|----------------------|------------------|-------|-----------------|------------------|
|            |                          |                                  |                           |                      | (mm)             |       |                 |                  |
| OT 300 P22 | 22                       | 260                              | 300                       | 3000                 | 57,4             | 119,3 | 1-5/16" UNF     | 1-1/16" UNF      |
| OT 300 P28 | 28                       | 260                              | 300                       | 3000                 | 59,7             | 123,7 | 1-5/16" UNF     | 1-1/16" UNF      |
| OT 300 P32 | 32                       | 260                              | 300                       | 3000                 | 61,2             | 126,9 | 1-5/16" UNF     | 1-1/16" UNF      |
| OT 300 P38 | 38                       | 240                              | 280                       | 3000                 | 63,5             | 131,5 | 1-5/8" UNF      | 1-5/16" UNF      |
| OT 300 P42 | 42                       | 240                              | 280                       | 3000                 | 65,0             | 134,5 | 1-5/8" UNF      | 1-5/16" UNF      |
| OT 300 P48 | 48                       | 240                              | 280                       | 3000                 | 72,3             | 149,1 | 1-5/8" UNF      | 1-5/16" UNF      |
| OT 300 P53 | 53                       | 220                              | 250                       | 3000                 | 74,2             | 152,9 | 1-5/8" UNF      | 1-5/16" UNF      |
| OT 300 P63 | 63                       | 200                              | 240                       | 2100                 | 78,0             | 160,5 | 1-5/8" UNF      | 1-5/16" UNF      |
| OT 300 P73 | 73                       | 180                              | 210                       | 2100                 | 81,9             | 168,2 | 1-7/8" UNF      | 1-5/8" UNF       |
| OT 300 P82 | 82                       | 170                              | 200                       | 2100                 | 85,3             | 175,1 | 1-7/8" UNF      | 1-5/8" UNF       |
| OT 300 P90 | 90                       | 150                              | 180                       | 2100                 | 88,3             | 181,1 | 1-7/8" UNF      | 1-5/8" UNF       |



### EXAMPLE OF ORDERING CODE

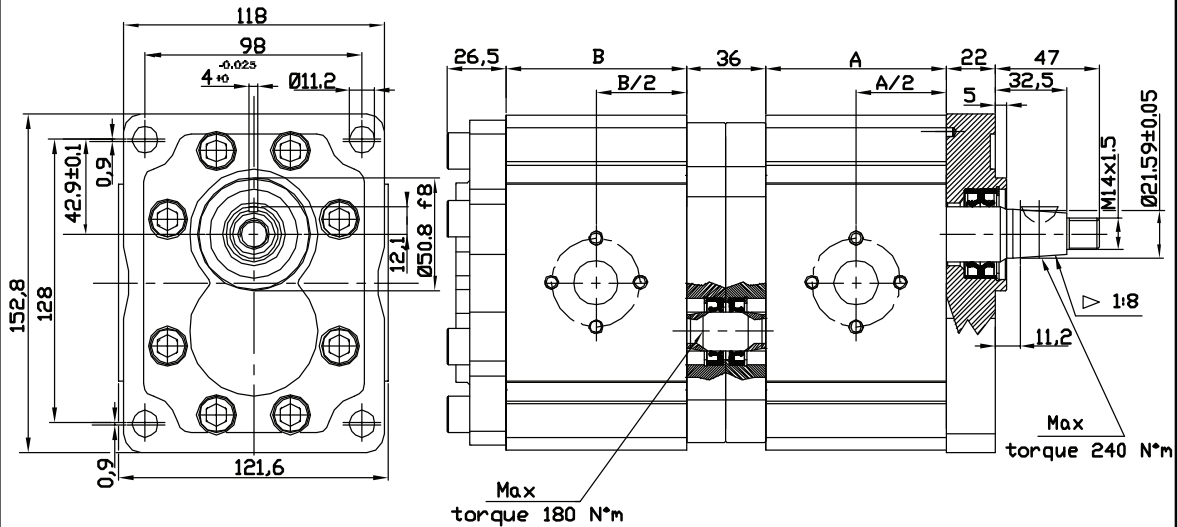
**OT300 P 28 S / R 33 S3**



AVAILABLE FOR QUANTITIES

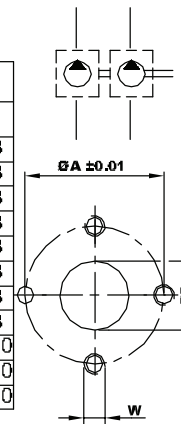
## GROUP 3 PUMPS- TANDEM

**VERSION: P38 P3**



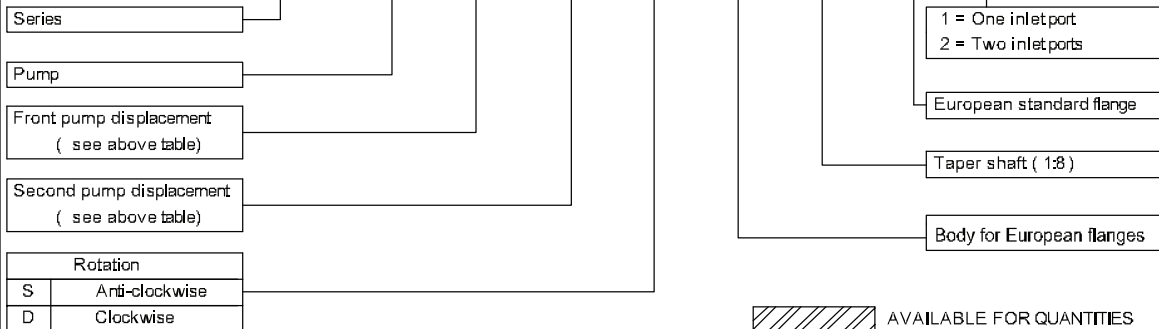
**NOTE:** The biggest displacement pump must be in the front position

| Type       | Displacement<br>(cc/rev) | Max working pressure P1<br>(bar) | Peak pressure P3<br>(bar) | Max speed<br>(r.p.m) | Dimension<br>L M |       | Inlet port |    |     | Outlet port |    |     |
|------------|--------------------------|----------------------------------|---------------------------|----------------------|------------------|-------|------------|----|-----|-------------|----|-----|
|            |                          |                                  |                           |                      | (mm)             | (mm)  | ØD         | ØA | W   | ØD          | ØA | W   |
| OT 300 P22 | 22                       | 260                              | 300                       | 3000                 | 70,8             | 70,8  | 27         | 51 | M10 | 19          | 40 | M8  |
| OT 300 P28 | 28                       | 260                              | 300                       | 3000                 | 75,4             | 75,4  | 27         | 51 | M10 | 19          | 40 | M8  |
| OT 300 P32 | 32                       | 260                              | 300                       | 3000                 | 78,4             | 78,4  | 27         | 51 | M10 | 19          | 40 | M8  |
| OT 300 P38 | 38                       | 240                              | 280                       | 3000                 | 83,0             | 83,0  | 27         | 51 | M10 | 19          | 40 | M8  |
| OT 300 P42 | 42                       | 240                              | 280                       | 3000                 | 86,0             | 86,0  | 27         | 51 | M10 | 19          | 40 | M8  |
| OT 300 P48 | 48                       | 240                              | 280                       | 3000                 | 100,6            | 100,6 | 27         | 51 | M10 | 19          | 40 | M8  |
| OT 300 P53 | 53                       | 220                              | 250                       | 3000                 | 104,4            | 104,4 | 27         | 51 | M10 | 19          | 40 | M8  |
| OT 300 P63 | 63                       | 200                              | 240                       | 2100                 | 112,0            | 112,0 | 27         | 51 | M10 | 19          | 40 | M8  |
| OT 300 P73 | 73                       | 180                              | 210                       | 2100                 | 119,7            | 119,7 | 36         | 62 | M12 | 27          | 51 | M10 |
| OT 300 P82 | 82                       | 170                              | 200                       | 2100                 | 126,6            | 126,6 | 36         | 62 | M12 | 27          | 51 | M10 |
| OT 300 P90 | 90                       | 150                              | 180                       | 2100                 | 132,6            | 132,6 | 36         | 62 | M12 | 27          | 51 | M10 |



### EXAMPLE OF ORDERING CODE

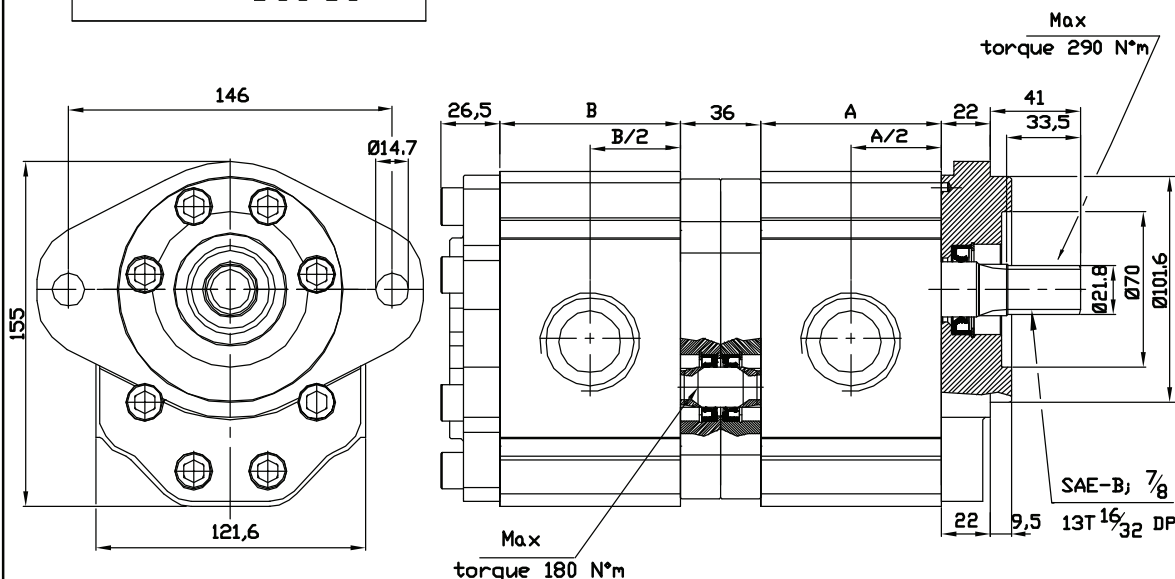
**OT300 P 48 / 22 S / P 38 P3 / 2**



AVAILABLE FOR QUANTITIES

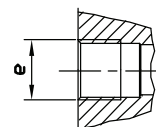
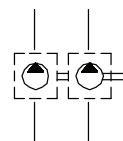
## GROUP 3 PUMPS- TANDEM

**VERSION: G33 S3**



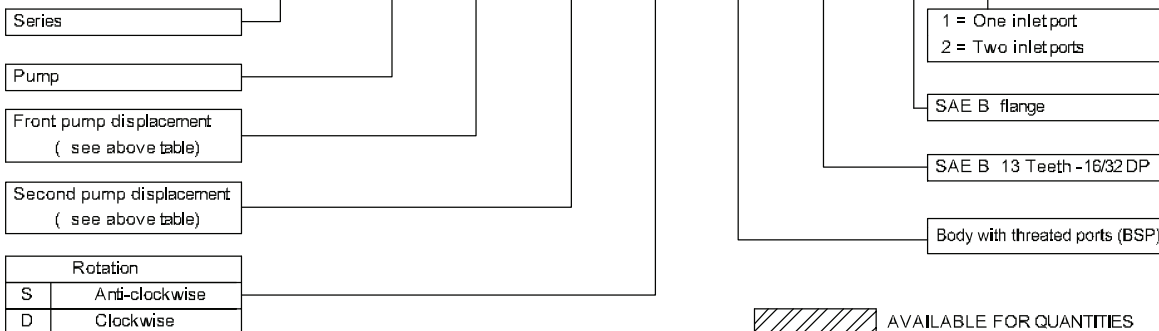
**NOTE:** The biggest displacement pump must be in the front position

| Type       | Displacement<br>(cc/rev) | Max working pressure P1<br>(bar) | Peak pressure P3 | Max speed<br>(r.p.m) | Dimension<br>L M |       | Inlet port<br>e | Outlet port<br>e |
|------------|--------------------------|----------------------------------|------------------|----------------------|------------------|-------|-----------------|------------------|
|            |                          |                                  |                  |                      | (mm)             | (mm)  |                 |                  |
| OT 300 P22 | 22                       | 260                              | 300              | 3000                 | 70,8             | 70,8  | G 1             | G 3/4            |
| OT 300 P28 | 28                       | 260                              | 300              | 3000                 | 75,4             | 75,4  | G 1             | G 3/4            |
| OT 300 P32 | 32                       | 260                              | 300              | 3000                 | 78,4             | 78,4  | G 1             | G 3/4            |
| OT 300 P38 | 38                       | 240                              | 280              | 3000                 | 83,0             | 83,0  | G 1             | G 3/4            |
| OT 300 P42 | 42                       | 240                              | 280              | 3000                 | 86,0             | 86,0  | G 1             | G 3/4            |
| OT 300 P48 | 48                       | 240                              | 280              | 3000                 | 100,6            | 100,6 | G 1             | G 3/4            |
| OT 300 P53 | 53                       | 220                              | 250              | 3000                 | 104,4            | 104,4 | G 1             | G 3/4            |
| OT 300 P63 | 63                       | 200                              | 240              | 2100                 | 112,0            | 112,0 | G 1+1/4         | G 3/4            |
| OT 300 P73 | 73                       | 180                              | 210              | 2100                 | 119,7            | 119,7 | G 1+1/4         | G 1              |
| OT 300 P82 | 82                       | 170                              | 200              | 2100                 | 126,6            | 126,6 | G 1+1/4         | G 1              |
| OT 300 P90 | 90                       | 150                              | 180              | 2100                 | 132,6            | 132,6 | G 1+1/4         | G 1              |



### EXAMPLE OF ORDERING CODE

**OT300 P 48 / 22 S / G 33 S3 / 2**



AVAILABLE FOR QUANTITIES