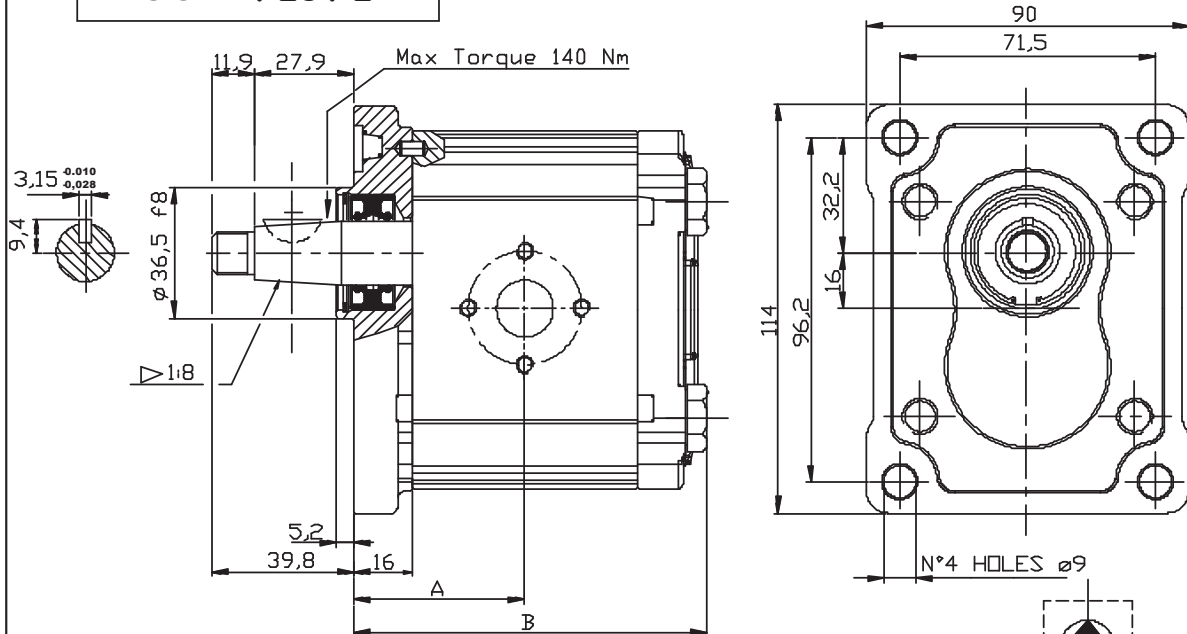
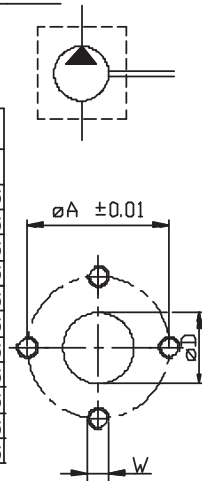


GROUP 2 PUMPS- EUROPEAN STANDARD

VERSION: P28 P2



Type	Displacement (cc/rev)	Max working pressure P1 (bar)	Peak pressure P3 (bar)	Max speed (r.p.m)	Dimension		Inlet port			Outlet port		
					A	B	ØD	ØA	W	ØD	ØA	W
OT 200 P04	04,10	250	300	4000	40,00	83,50	13	30	M6	13	30	M6
OT 200 P06	06,20	250	300	3500	41,50	86,50	13	30	M6	13	30	M6
OT 200 P08	08,20	250	300	3500	43,00	89,50	13	30	M6	13	30	M6
OT 200 P11	11,20	250	300	3500	45,15	93,80	13	30	M6	13	30	M6
OT 200 P14	14,00	240	300	3000	47,15	97,80	20	40	M8	13	30	M6
OT 200 P16	16,00	240	300	3000	48,60	100,7	20	40	M8	13	30	M6
OT 200 P20	20,00	200	240	3000	51,50	106,5	20	40	M8	13	30	M6
OT 200 P22	22,50	170	210	2500	57,35	118,2	20	40	M8	13	30	M6
OT 200 P25	25,10	170	210	2500	59,25	122,0	20	40	M8	13	30	M6
OT 200 P28	28,00	140	180	2500	61,35	126,2	20	40	M8	13	30	M6
OT 200 P30	30,00	130	170	2000	62,75	129,0	20	40	M8	13	30	M6



EXAMPLE OF ORDERING CODE

OT200 P 08 S / P 28 P2

Series

Pump

Displacement (see above table)

Rotation

S Anti-clockwise
D Clockwise

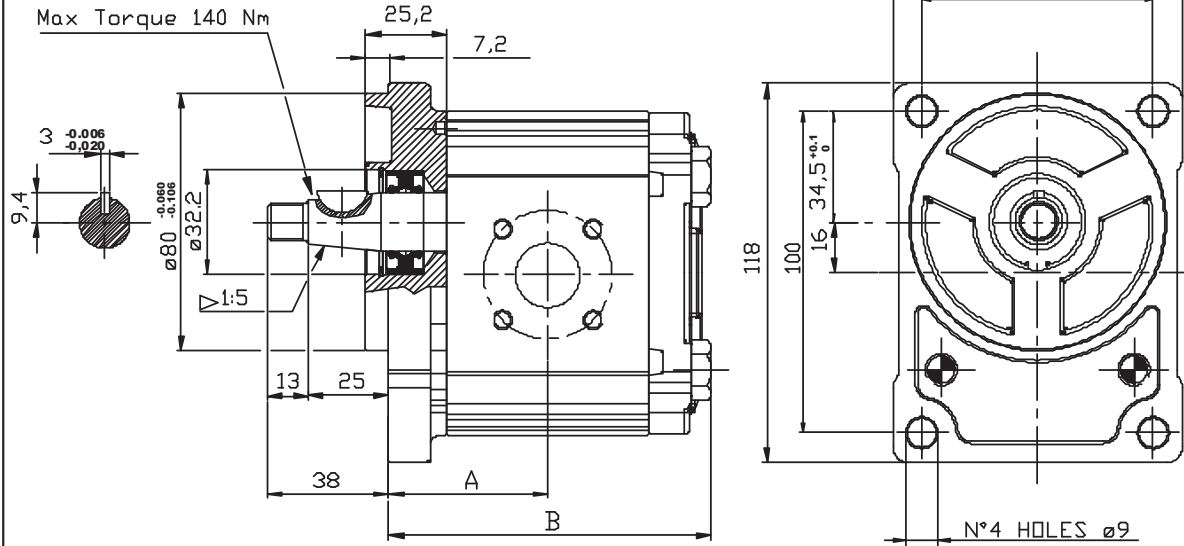
European standard flange

Taper shaft (1:8)

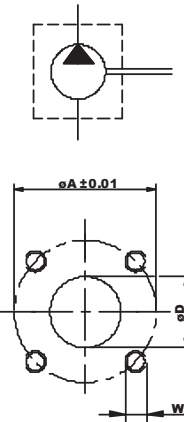
Body for European flanges

GROUP 2 PUMPS- GERMAN STANDARD

VERSION: B25 B2



Type	Displacement (cc/rev)	Max working pressure P1 (bar)	Peak pressure P3 (bar)	Max speed (r.p.m)	Dimension		Inlet port			Outlet port		
					A	B	ØD	ØA	W	ØD	ØA	W
OT 200 P04	04,10	250	300	4000	42,00	85,50	20	40	M6	15	35	M6
OT 200 P06	06,20	250	300	3500	43,50	88,50	20	40	M6	15	35	M6
OT 200 P08	08,20	250	300	3500	45,00	91,50	20	40	M6	15	35	M6
OT 200 P11	11,20	250	300	3500	47,15	95,80	20	40	M6	15	35	M6
OT 200 P14	14,00	240	300	3000	49,15	99,80	20	40	M6	15	35	M6
OT 200 P16	16,00	240	300	3000	50,60	102,7	20	40	M6	15	35	M6
OT 200 P20	20,00	200	240	3000	53,50	108,5	20	40	M6	15	35	M6
OT 200 P22	22,50	170	210	2500	59,35	120,2	20	40	M6	15	35	M6
OT 200 P25	25,10	170	210	2500	61,25	124,0	20	40	M6	15	35	M6
OT 200 P28	28,00	140	180	2500	63,35	128,2	20	40	M6	15	35	M6
OT 200 P30	30,00	130	170	2000	64,75	131,0	20	40	M6	15	35	M6



EXAMPLE OF ORDERING CODE

OT200 P 08 S / B 25 B2

Series

Pump

Displacement (see above table)

Rotation

S Anti-clockwise
D Clockwise

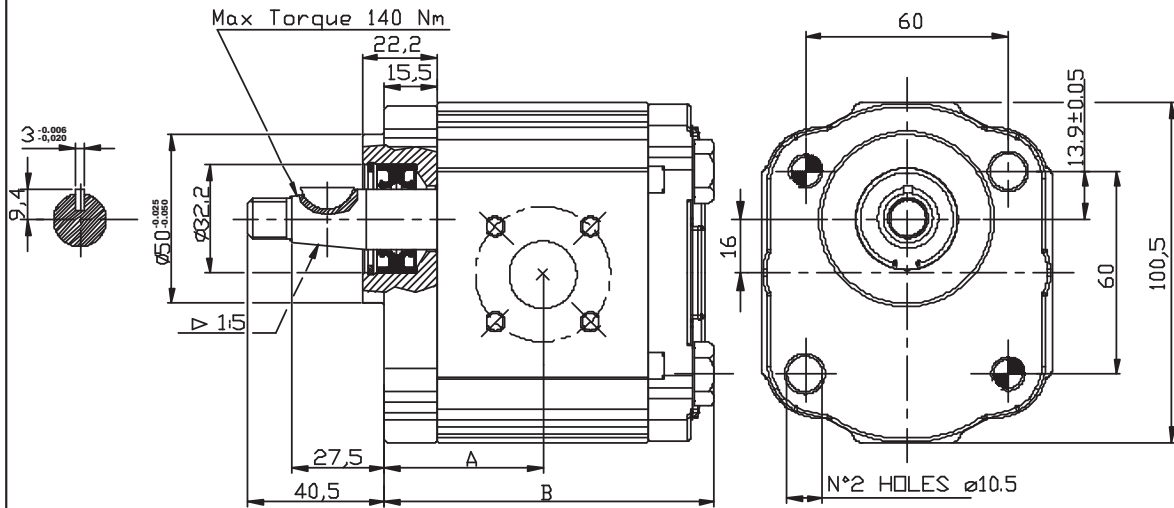
German standard flange

Taper shaft (1:5)

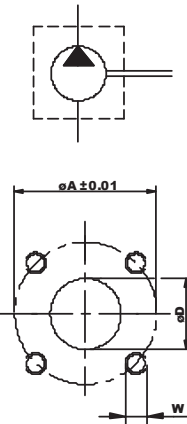
Body for German flanges

GROUP 2 PUMPS- GERMAN STANDARD

VERSION: B25 B4

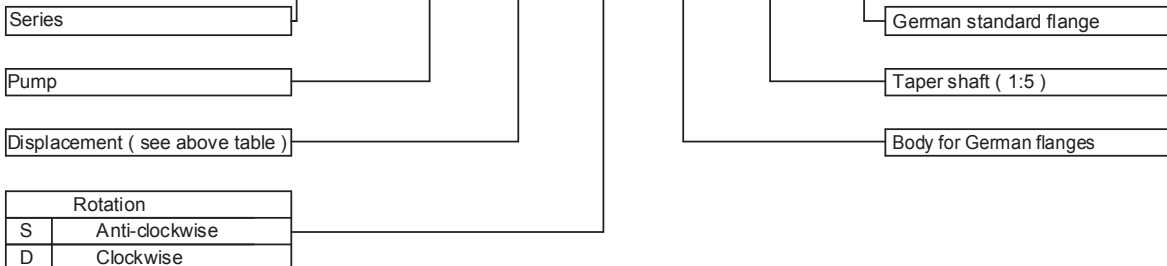


Type	Displacement (cc/rev)	Max working pressure P1 (bar)	Peak pressure P3 (bar)	Max speed (r.p.m)	Dimension		Inlet port			Outlet port		
					A	B	ØD	ØA	W	ØD	ØA	W
OT 200 P04	04,10	250	300	4000	39.50	83,00	20	40	M6	15	35	M6
OT 200 P06	06,20	250	300	3500	41.00	86,00	20	40	M6	15	35	M6
OT 200 P08	08,20	250	300	3500	42.50	89,00	20	40	M6	15	35	M6
OT 200 P11	11,20	250	300	3500	45.65	93,30	20	40	M6	15	35	M6
OT 200 P14	14,00	240	300	3000	46.65	97,30	20	40	M6	15	35	M6
OT 200 P16	16,00	240	300	3000	48.10	100,2	20	40	M6	15	35	M6
OT 200 P20	20,00	200	240	3000	51.00	103,5	20	40	M6	15	35	M6
OT 200 P22	22,50	170	210	2500	56.85	117,7	20	40	M6	15	35	M6
OT 200 P25	25,10	170	210	2500	58.75	121,5	20	40	M6	15	35	M6
OT 200 P28	28,00	140	180	2500	60.85	125,7	20	40	M6	15	35	M6
OT 200 P30	30,00	130	170	2000	62.25	128,5	20	40	M6	15	35	M6



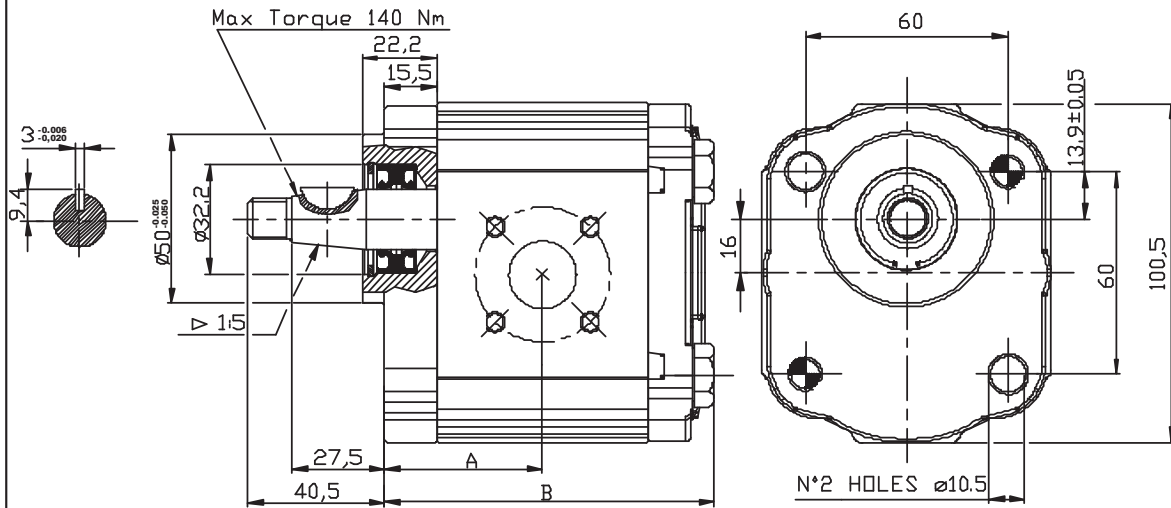
EXAMPLE OF ORDERING CODE

OT200 P 08 S / B 25 B4

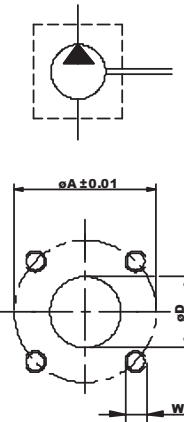


GROUP 2 PUMPS- GERMAN STANDARD

VERSION: B25 B5



Type	Displacement (cc/rev)	Max working pressure P1 (bar)	Peak pressure P3 (bar)	Max speed (r.p.m)	Dimension		Inlet port			Outlet port		
					A	B	ØD	ØA	W	ØD	ØA	W
					(mm)							
OT 200 P04	04,10	250	300	4000	39.50	83,00	20	40	M6	15	35	M6
OT 200 P06	06,20	250	300	3500	41.00	86,00	20	40	M6	15	35	M6
OT 200 P08	08,20	250	300	3500	42.50	89,00	20	40	M6	15	35	M6
OT 200 P11	11,20	250	300	3500	45.65	93,30	20	40	M6	15	35	M6
OT 200 P14	14,00	240	300	3000	46.65	97,30	20	40	M6	15	35	M6
OT 200 P16	16,00	240	300	3000	48.10	100,2	20	40	M6	15	35	M6
OT 200 P20	20,00	200	240	3000	51.00	103,5	20	40	M6	15	35	M6
OT 200 P22	22,50	170	210	2500	56.85	117,7	20	40	M6	15	35	M6
OT 200 P25	25,10	170	210	2500	58.75	121,5	20	40	M6	15	35	M6
OT 200 P28	28,00	140	180	2500	60.85	125,7	20	40	M6	15	35	M6
OT 200 P30	30,00	130	170	2000	62.25	128,5	20	40	M6	15	35	M6



EXAMPLE OF ORDERING CODE

OT200 P 08 S / B 25 B5

Series

Pump

Displacement (see above table)

Rotation

S Anti-clockwise
D Clockwise

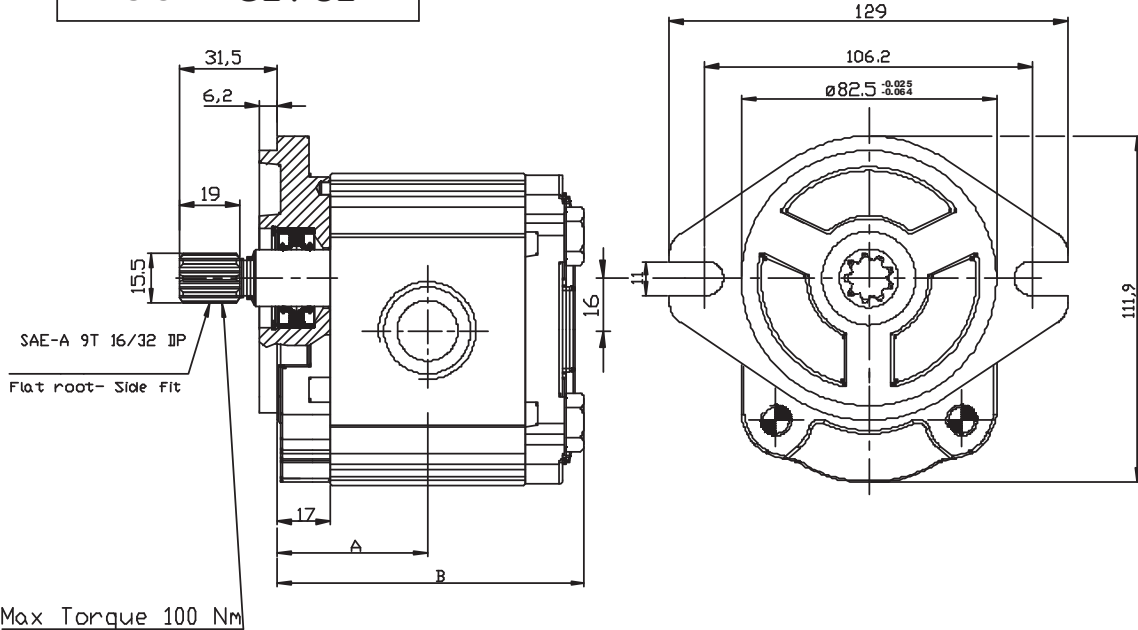
German standard flange

Taper shaft (1:5)

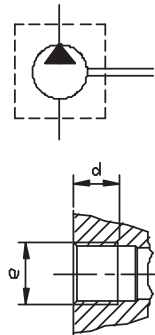
Body for German flanges

GROUP 2 PUMPS- SAE "A" STANDARD

VERSION: G21 S2

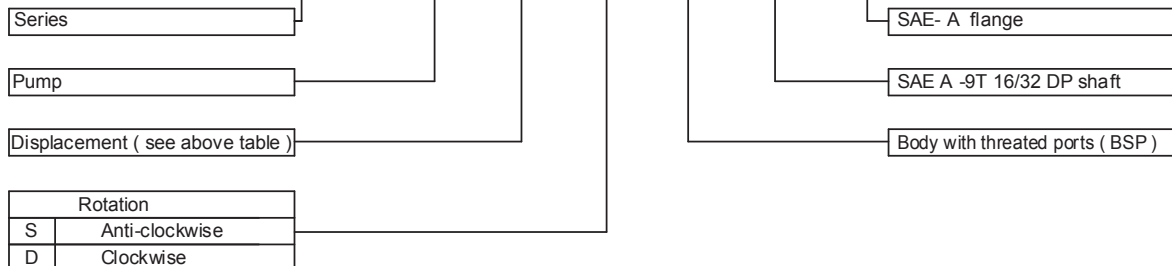


Type	Displacement (cc/rev)	Max working pressure P1 (bar)	Peak pressure P3 (bar)	Max speed (r.p.m)	Dimension		Inlet port		Outlet port	
					A	B	e	d	e	d
OT 200 P04	04,10	250	300	4000	41,00	84,50	G1/2	14	G1/2	14
OT 200 P06	06,20	250	300	3500	42,50	87,50	G1/2	14	G1/2	14
OT 200 P08	08,20	250	300	3500	44,00	90,50	G1/2	14	G1/2	14
OT 200 P11	11,20	250	300	3500	46,15	94,80	G1/2	14	G1/2	14
OT 200 P14	14,00	240	300	3000	48,15	98,80	G3/4	16	G1/2	14
OT 200 P16	16,00	240	300	3000	49,60	101,7	G3/4	16	G1/2	14
OT 200 P20	20,00	200	240	3000	52,50	107,5	G3/4	16	G1/2	14
OT 200 P22	22,50	170	210	2500	58,35	119,2	G3/4	16	G1/2	14
OT 200 P25	25,10	170	210	2500	60,25	123,0	G3/4	16	G1/2	14
OT 200 P28	28,00	140	180	2500	62,35	127,2	G3/4	16	G1/2	14
OT 200 P30	30,00	130	170	2000	63,75	130,0	G3/4	16	G1/2	14



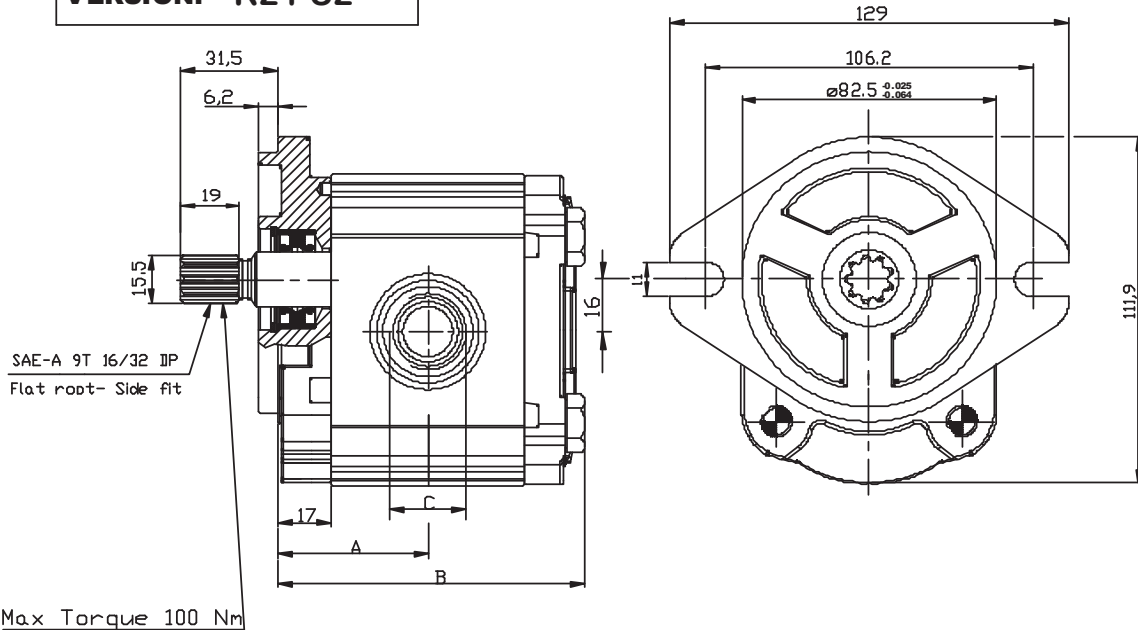
EXAMPLE OF ORDERING CODE

OT200 P 08 S / G 21 S2



GROUP 2 PUMPS- SAE "A" STANDARD

VERSION: R21 S2



Type	Displacement (cc/rev)	Max working pressure P1 (bar)	Peak pressure P3 (bar)	Max speed (r.p.m)	Dimension		Inlet port C	Outlet port C
					A	B		
OT 200 P04	04,10	250	300	4000	41,00	84,50	7/8-14UNF-2B	7/8-14UNF-2B
OT 200 P06	06,20	250	300	3500	42,50	87,50		
OT 200 P08	08,20	250	300	3500	44,00	90,50		
OT 200 P11	11,20	250	300	3500	46,15	94,80		
OT 200 P14	14,00	240	300	3000	48,15	98,80	1-1/16-12UN-2B	
OT 200 P16	16,00	240	300	3000	49,60	101,7		
OT 200 P20	20,00	200	240	3000	52,50	107,5		
OT 200 P22	22,50	170	210	2500	58,35	119,2		
OT 200 P25	25,10	170	210	2500	60,25	123,0		
OT 200 P28	28,00	140	180	2500	62,35	127,2		
OT 200 P30	30,00	130	170	2000	63,75	130,0		

EXAMPLE OF ORDERING CODE

OT200 P 08 S / R 21 S2

Series

Pump

Displacement (see above table)

Rotation

S Anti-clockwise

D Clockwise

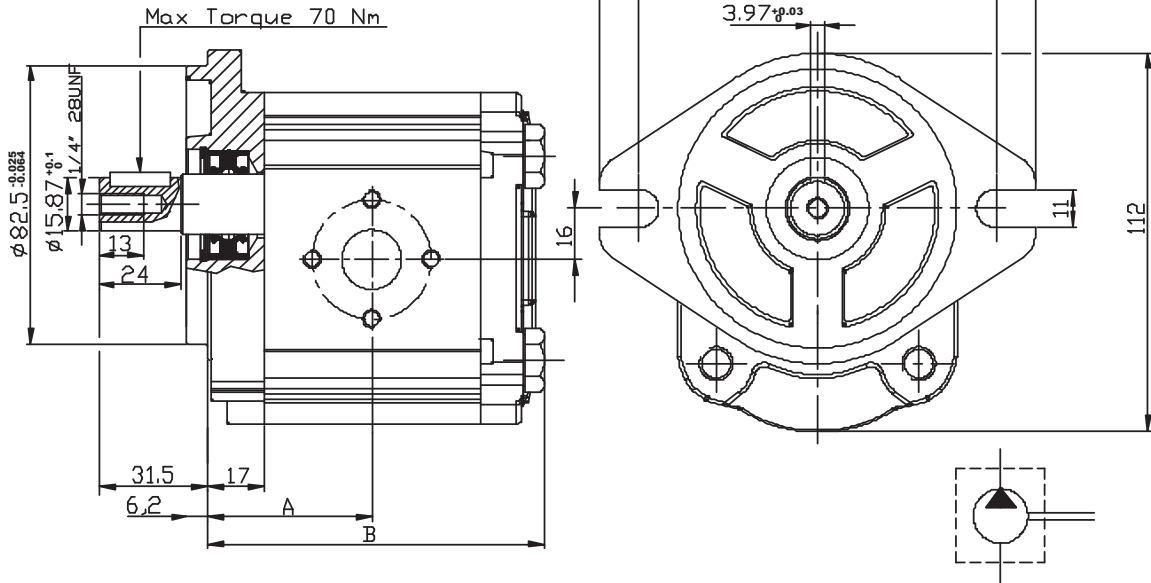
SAE- A flange

SAE A -9T 16/32 DP shaft

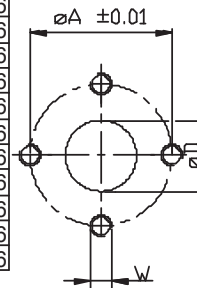
Body with O-ring boss ports

GROUP 2 PUMPS- SAE "A" STANDARD

VERSION: P31 S2



Type	Displacement (cc/rev)	Max working pressure P1 (bar)	Peak pressure P3 (bar)	Max speed (r.p.m)	Dimension		Inlet port			Outlet port		
					A	B	ϕD	ϕA	W	ϕD	ϕA	W
					(mm)							
OT 200 P04	04,10	250	300	4000	41,00	84,50	13	30	M6	13	30	M6
OT 200 P06	06,20	250	300	3500	42,50	87,50	13	30	M6	13	30	M6
OT 200 P08	08,20	250	300	3500	44,00	90,50	13	30	M6	13	30	M6
OT 200 P11	11,20	250	300	3500	46,15	94,80	13	30	M6	13	30	M6
OT 200 P14	14,00	240	300	3000	48,15	98,80	20	40	M8	13	30	M6
OT 200 P16	16,00	240	300	3000	49,60	101,7	20	40	M8	13	30	M6
OT 200 P20	20,00	200	240	3000	52,50	107,5	20	40	M8	13	30	M6
OT 200 P22	22,50	170	210	2500	58,35	119,2	20	40	M8	13	30	M6
OT 200 P25	25,10	170	210	2500	60,25	123,0	20	40	M8	13	30	M6
OT 200 P28	28,00	140	180	2500	62,35	127,2	20	40	M8	13	30	M6
OT 200 P30	30,00	130	170	2000	63,75	130,0	20	40	M8	13	30	M6



EXAMPLE OF ORDERING CODE

OT200 P 08 S / P 31 S2

Series

Pump

Displacement (see above table)

Rotation

S Anti-clockwise
D Clockwise

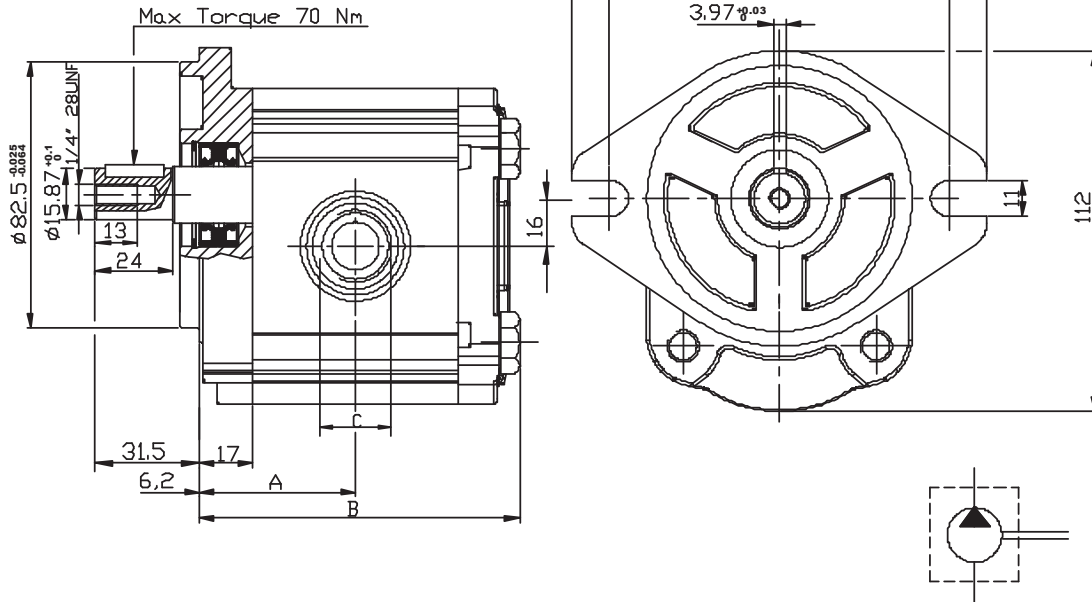
SAE - A flange

Straight shaft $\phi 15.87$

Body for European flanges

GROUP 2 PUMPS- SAE "A" STANDARD

VERSION: R31 S2



Type	Displacement (cc/rev)	Max working pressure P1 (bar)	Peak pressure P3 (bar)	Max speed (r.p.m)	Dimension		Inlet port C	Outlet port C
					A	B		
					(mm)			
OT 200 P04	04,10	250	300	4000	41,00	84,50	7/8-14UNF-2B	7/8-14UNF-2B
OT 200 P06	06,20	250	300	3500	42,50	87,50		
OT 200 P08	08,20	250	300	3500	44,00	90,50		
OT 200 P11	11,20	250	300	3500	46,15	94,80		
OT 200 P14	14,00	240	300	3000	48,15	98,80		
OT 200 P16	16,00	240	300	3000	49,60	101,7	1-1/16-12UN-2B	
OT 200 P20	20,00	200	240	3000	52,50	107,5		
OT 200 P22	22,50	170	210	2500	58,35	119,2		
OT 200 P25	25,10	170	210	2500	60,25	123,0		
OT 200 P28	28,00	140	180	2500	62,35	127,2		
OT 200 P30	30,00	130	170	2000	63,75	130,0		

EXAMPLE OF ORDERING CODE

OT200 P 08 S / R 31 S2

Series

Pump

Displacement (see above table)

Rotation

S Anti-clockwise
D Clockwise

SAE- A flange

Straight shaft Ø15.87

Body with O-ring boss ports