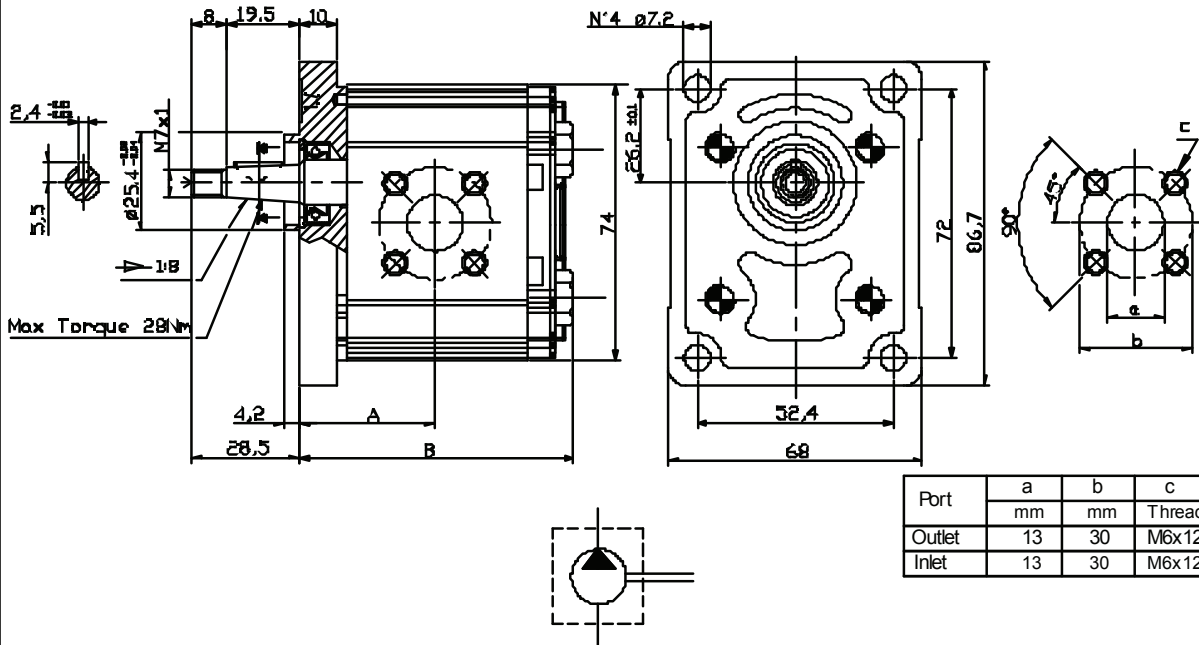


GROUP 1 PUMPS- EUROPEAN STANDARD

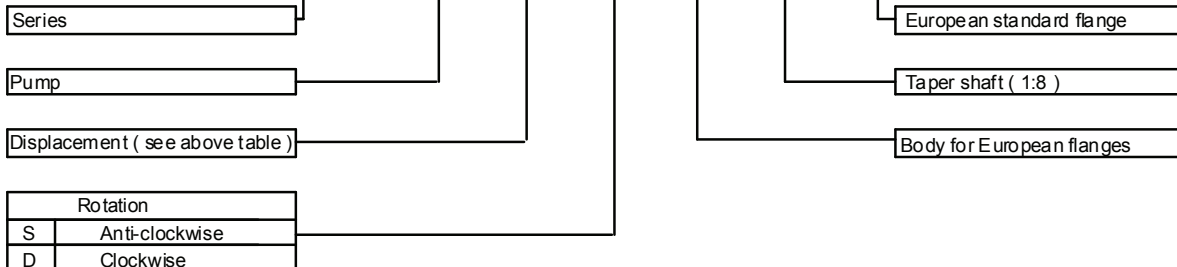
VERSION: B18 P1



Type	Displacement (cc/rev)	Max working pressure P1 (bar)	Peak pressure P3 (bar)	Max speed (r.p.m)	Dimension A B (mm)		Absorbed torque at 150 bar (Nm)	Code (Anti-clockwise)	Code (Clockwise)
					A	B			
OT 100 P07	0.73	200	240	5000	31.30	64.5	1.8	PS1007081S	PS1007081D
OT 100 P11	1.05	250	290	5000	31.90	65.6	2.4	PS1007082S	PS1007082D
OT 100 P16	1.45	260	300	5000	32.75	67.3	4.2	PS1007083S	PS1007083D
OT 100 P20	1.80	260	300	5000	33.45	68.7	5.2	PS1007084S	PS1007084D
OT 100 P25	2.45	260	300	5000	34.50	70.8	6.7	PS1007085S	PS1007085D
OT 100 P32	3.05	260	300	5000	35.50	72.8	8.3	PS1007086S	PS1007086D
OT 100 P40	3.80	260	300	4500	36.90	75.6	10.1	PS1007087S	PS1007087D
OT 100 P49	4.70	240	280	4500	38.45	78.7	12.7	PS1007088S	PS1007088D
OT 100 P58	5.55	200	240	4000	40.00	81.8	15.0	PS1007089S	PS1007089D
OT 100 P65	6.25	190	230	3750	41.25	84.3	16.8	PS1007090S	PS1007090D
OT 100 P79	7.60	170	220	3500	43.60	89.0	20.5	PS1017091S	PS1017091D

EXAMPLE OF ORDERING CODE

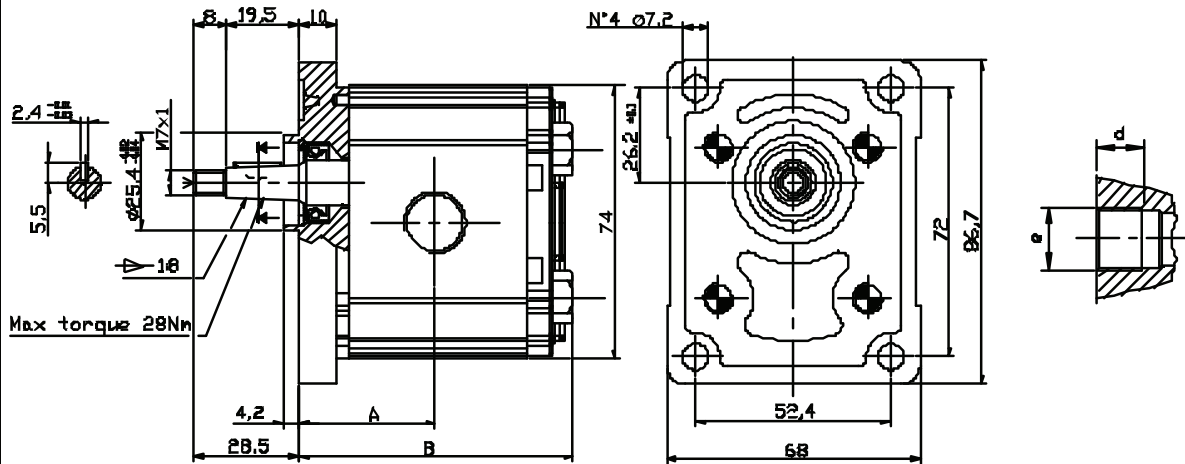
OT100 P 20 S / B 18 P1



AVAILABLE FOR QUANTITIES

GROUP 1 PUMPS- EUROPEAN STANDARD

VERSION: G18 P1

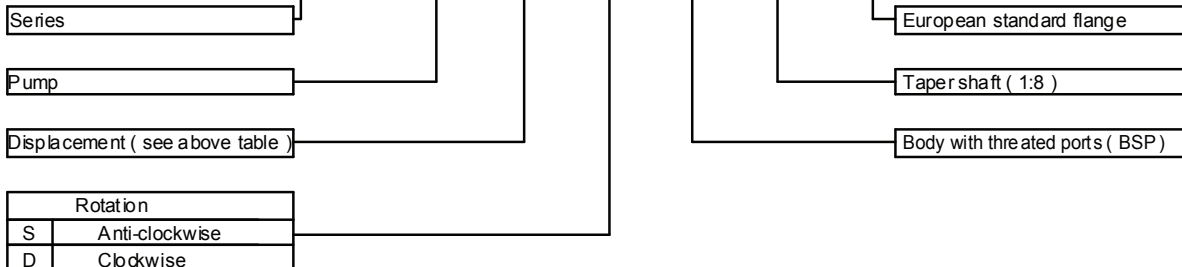


Port	Dimension	e	d
			mm
Outlet	3/8"	G 3/8"	14
Inlet	3/8"	G 3/8"	14

Type	Displacement (cc/rev)	Max working pressure P1 (bar)	Peak pressure P3 (bar)	Max speed (r.p.m)	Dimension		Absorbed torque at 150 bar (Nm)	Code (Anti-clockwise)	Code (Clockwise)
					A	B			
					(mm)				
OT 100 P07	0.73	200	240	5000	31.30	64.5	1.8	PS1007061S	PS1007061D
OT 100 P11	1.05	240	280	5000	31.90	65.6	2.4	PS1007062S	PS1007062D
OT 100 P16	1.45	260	300	5000	32.75	67.3	4.2	PS1007063S	PS1007063D
OT 100 P20	1.80	260	300	5000	33.45	68.7	5.2	PS1007064S	PS1007064D
OT 100 P25	2.45	260	300	5000	34.50	70.8	6.7	PS1007065S	PS1007065D
OT 100 P32	3.05	260	300	5000	35.50	72.8	8.3	PS1007066S	PS1007066D
OT 100 P40	3.80	260	300	4500	36.90	75.6	10.1	PS1007067S	PS1007067D
OT 100 P49	4.70	240	280	4500	38.45	78.7	12.7	PS1007068S	PS1007068D
OT 100 P58	5.55	200	240	4000	40.00	81.8	15.0	PS1007069S	PS1007069D
OT 100 P65	6.25	190	230	3750	41.25	84.3	16.8	PS1007070S	PS1007070D
OT 100 P79	7.60	170	220	3500	43.60	89.0	20.5	PS1017071S	PS1017071D

EXAMPLE OF ORDERING CODE

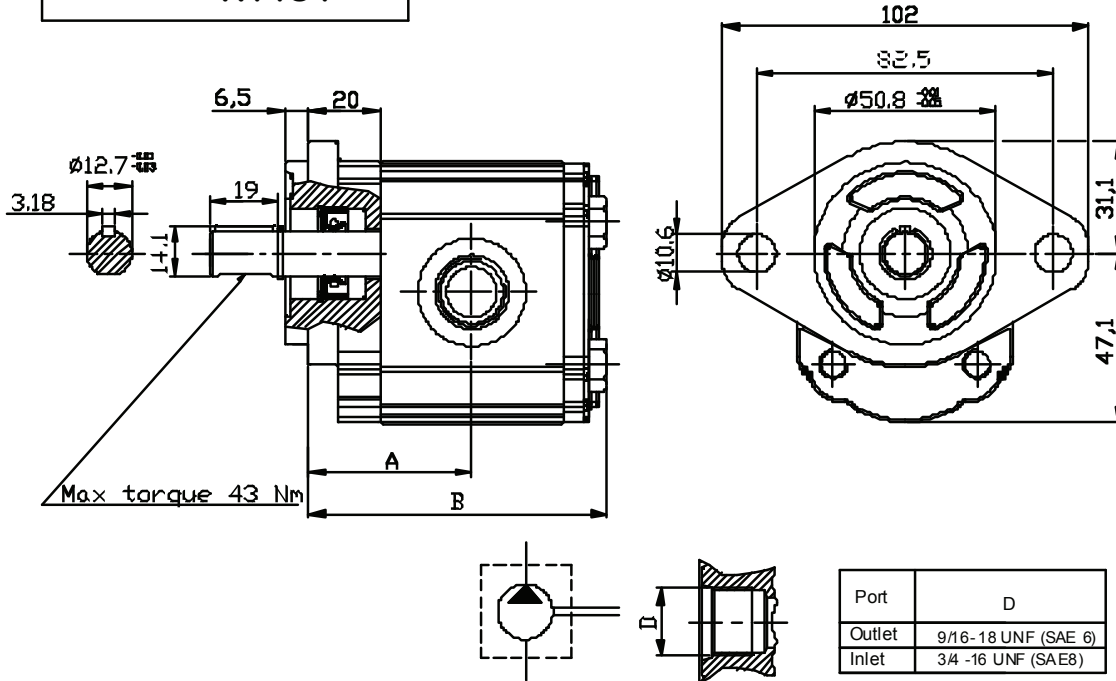
OT100 P 20 S / G 18 P1



AVAILABLE FOR QUANTITIES

GROUP 1 PUMPS- SAE "AA" STANDARD

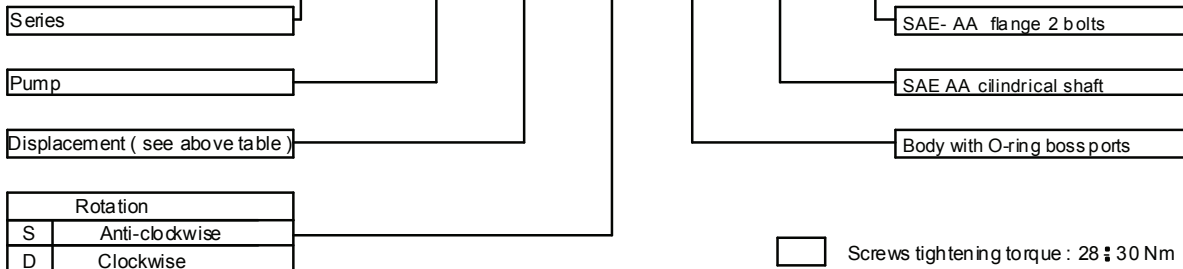
VERSION: R11S1



Type	Displacement (cc/rev)	Max working pressure P1 (bar)	Peak pressure P3 (bar)	Max speed (r.p.m)	Dimension (mm)		Absorbed torque at 150 bar (Nm)	Code (Anti-clockwise)	Code (Clockwise)
					A	B			
OT 100 P07	0.73	200	240	5000	38.35	69.00	1.8	PS1007120S	PS1007120D
OT 100 P11	1.05	240	280	5000	38.90	70.10	2.4	PS1007121S	PS1007121D
OT 100 P16	1.55	260	300	5000	39.75	71.80	4.2	PS1007122S	PS1007122D
OT 100 P20	1.90	260	300	5000	40.45	72.75	5.2	PS1007123S	PS1007123D
OT 100 P25	2.50	260	300	5000	41.50	75.30	6.7	PS1007124S	PS1007124D
OT 100 P32	3.10	260	300	5000	42.50	77.30	8.3	PS1007125S	PS1007125D
OT 100 P40	3.80	260	300	4500	43.90	80.10	10.1	PS1007126S	PS1007126D
OT 100 P49	4.70	240	280	4500	45.45	83.20	12.7	PS1007127S	PS1007127D
OT 100 P58	5.55	200	240	4000	47.00	86.30	15.0	PS1007128S	PS1007128D
OT 100 P65	6.25	190	230	3750	48.25	88.80	16.8	PS1007129S	PS1007129D
OT 100 P79	7.60	170	220	3500	50.60	93.50	20.5	PS1007130S	PS1007130D

EXAMPLE OF ORDERING CODE

OT100 P 20 S / R 11 S1

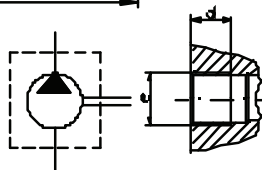
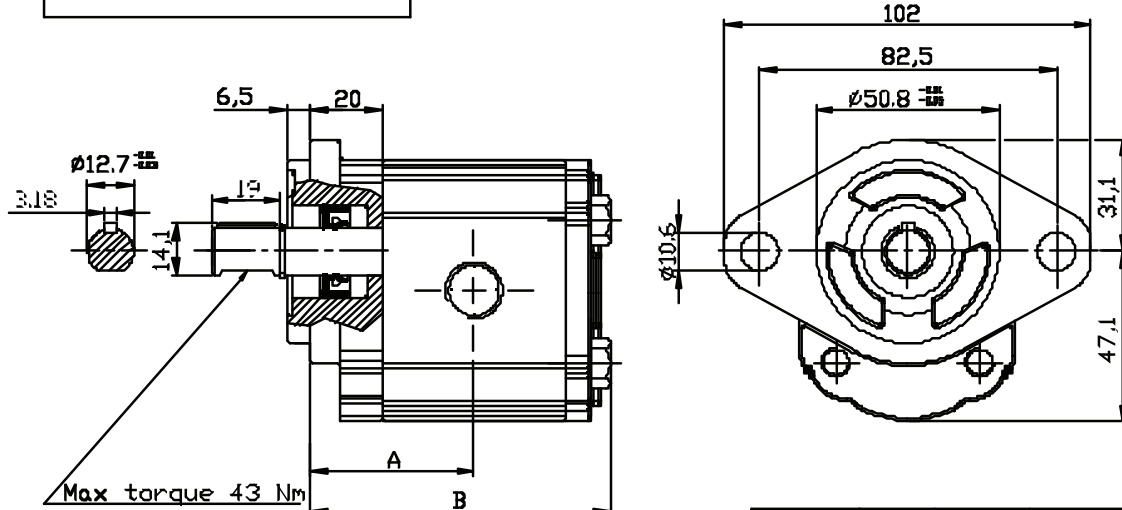


□ Screws tightening torque : 28 ± 30 Nm

▨ AVAILABLE FOR QUANTITIES

GROUP 1 PUMPS- SAE "AA" STANDARD

VERSION: G11S1



Displacement	Port	Dimension	e	d
				mm
From 0,70 to 4,50	Outlet	3/8"	G 3/8"	14
	Inlet	3/8"	G 3/8"	14
From 5,55 to 7,60	Outlet	3/8"	G 3/8"	14
	Inlet	1/2"	G 1/2"	14

Type	Displacement (cc/rev)	Max working pressure P1 (bar)	Peak pressure P3 (bar)	Max speed (r.p.m)	Dimension		Absorbed torque at 150 bar (Nm)	Code (Anti-clockwise)	Code (Clockwise)
					A	B			
					(mm)				
OT 100 P07	0.73	200	240	5000	38.35	69.00	1.8	PS1007131S	PS1007131D
OT 100 P11	1.05	240	280	5000	38.90	70.10	2.4	PS1007132S	PS1007132D
OT 100 P16	1.55	260	300	5000	39.75	71.80	4.2	PS1007133S	PS1007133D
OT 100 P20	1.90	260	300	5000	40.45	72.75	5.2	PS1007134S	PS1007134D
OT 100 P25	2.50	260	300	5000	41.50	75.30	6.7	PS1007135S	PS1007135D
OT 100 P32	3.10	260	300	5000	42.50	77.30	8.3	PS1007136S	PS1007136D
OT 100 P40	3.80	260	300	4500	43.90	80.10	10.1	PS1007137S	PS1007137D
OT 100 P49	4.70	240	280	4500	45.45	83.20	12.7	PS1007138S	PS1007138D
OT 100 P58	5.55	200	240	4000	47.00	86.30	15.0	PS1007139S	PS1007139D
OT 100 P65	6.25	190	230	3750	48.25	88.80	16.8	PS1007140S	PS1007140D
OT 100 P79	7.60	170	220	3500	50.60	93.50	20.5	PS1007141S	PS1007141D

EXAMPLE OF ORDERING CODE

OT100 P 20 S / G 11 S1

Series

Pump

Displacement (see above table)

Rotation

S	Anti-clockwise
D	Clockwise

SAE- AA flange 2 bolts

SAE AA cylindrical shaft

Body with threaded ports (BSP)

Screws tightening torque : 28 ± 30 Nm

AVAILABLE FOR QUANTITIES